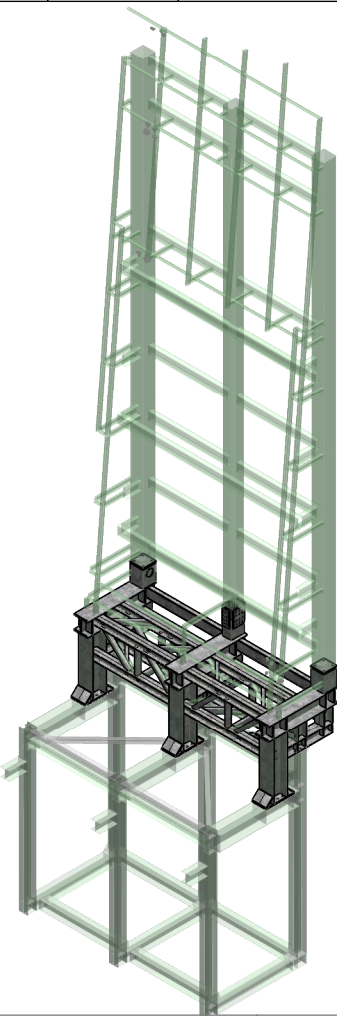
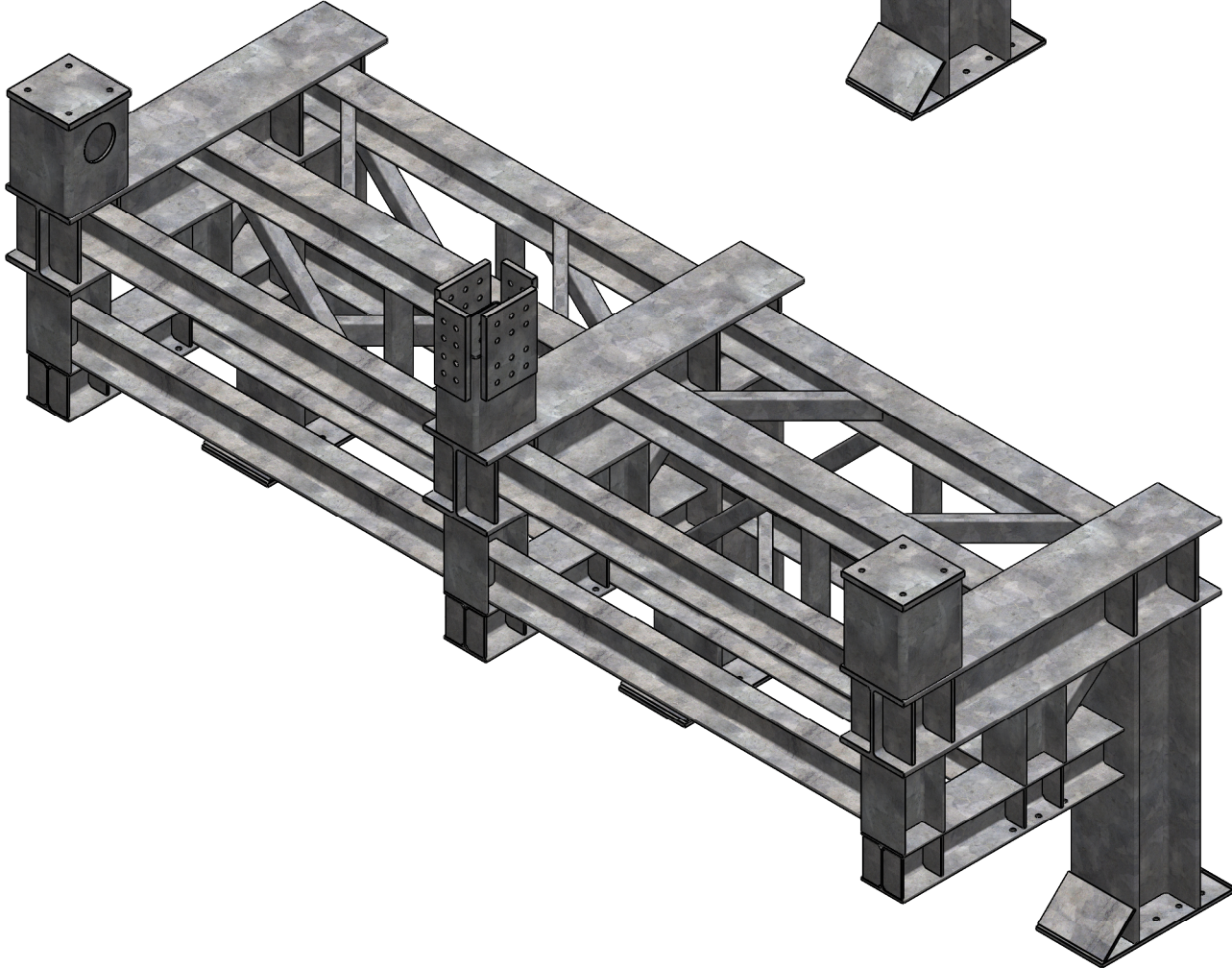
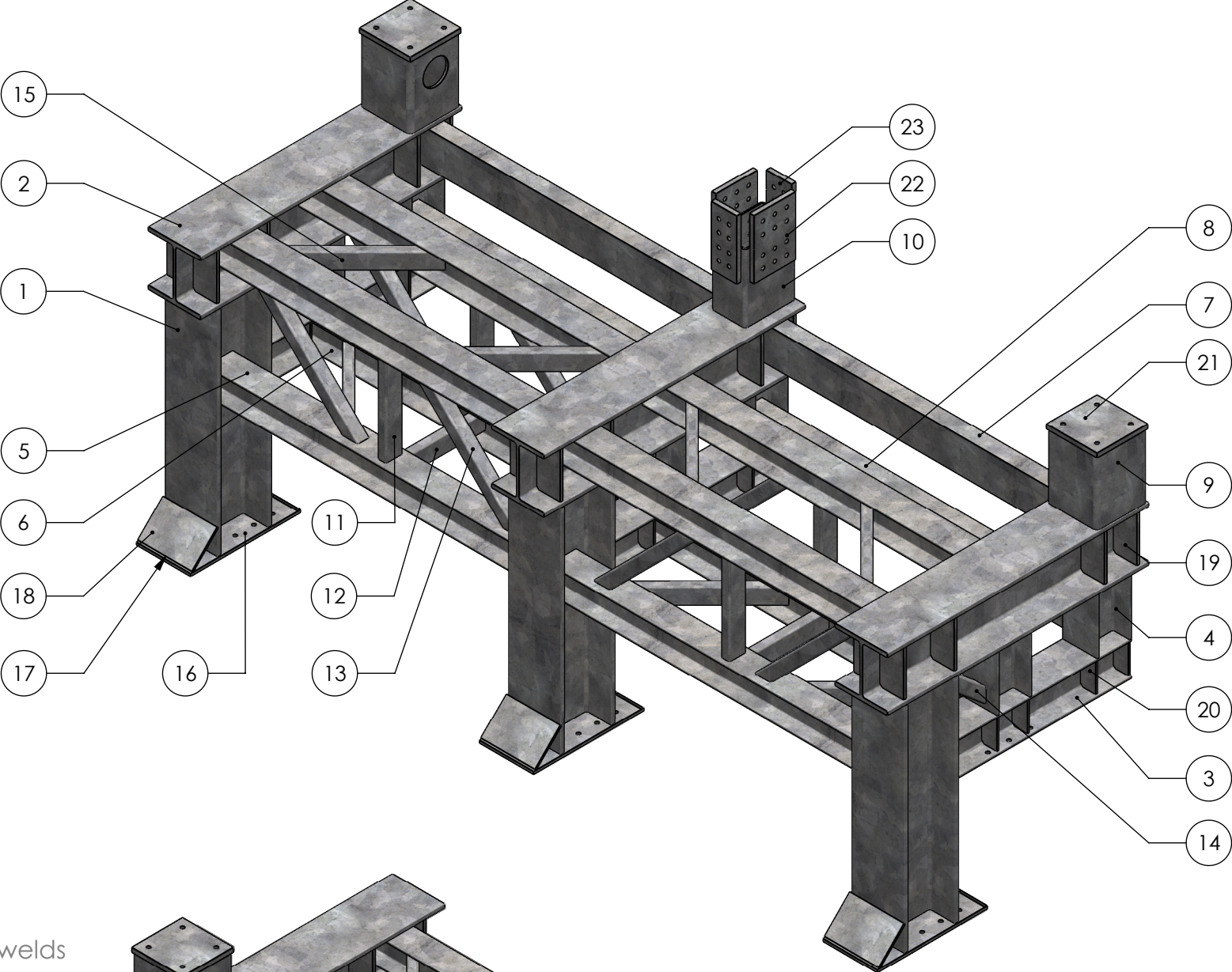


ITEM NO.	QTY.	DESCRIPTION	LENGTH
1	3	UC 305 x 305 x 137 - BSE-S1	1264.5
2	3	UC 305 x 305 x 137 - BSE-S2	1544
3	3	UC203 x 203 x 46 - BSE-S3	1074.5
4	6	UC203 x 203 x 46 - BSE-S4	377.9
5	6	UC 152 x 152 x 30 - BSE-S5	2015.7
6	2	UC 152 x 152 x 30 - BSE-S6	2022.3
7	2	PFC 200 x 90 x 30 - BSE-S7	2015.7
8	2	PFC 200 x 90 x 30 - BSE-S8	2022.3
9	2	SHS 300 x 300 x 12.5 - BSE-S9	375
10	1	RHS 300 x 200 x 8.0 - BSE-S10	400
11	4	RHS 100 x 50 x 5.0 - BSE-S11	541.9
12	2	RHS 100 x 50 x 5.0 - BSE-S12	536.5
13	8	SHS 70 x 70 x 5.0 - BSE-S13	836.36
14	3	SHS 70 x 70 x 5.0 - BSE-S14	425.75
15	8	RHS 100 x 50 x 5.0 - BSE-S15	808.73
16	3	Plate 320x650x15 - BSE-P1	
17	6	150x150x10 Gusset - BSE-P2	
18	6	Plate 212x320x10 - BSE-P3	
19	24	FLAT 140 x 15 - BSE-P4	270
20	24	FLAT 90 x 10 - BSE-P5	176
21	2	FLAT 300 x 25 - BSE-P6	300
22	2	FLAT 350 x 25 - BSE-P7	245
23	2	FLAT 350 x 25 - BSE-P8	150



All Welds are to be 8mm Fillet welds
unless otherwise stated

All Steel Grade S355

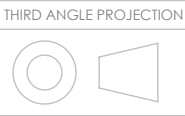
Galvanised Finish
(2-3mm Allowed on connections)

London Bridge
Advertising Stucture
Base Section Stage
Fully welded assembly

GENERAL DIMN TOLERANCES EXCEPT WHERE STATED
GENERAL ±2.0mm Length / ±1.0mm Hole-Hole
ANGULAR ±0°30'

ALL DIMENSIONS IN MILLIMETRES
UNLESS OTHERWISE STATED

8mm Fillet Weld (z) WPS1
UNLESS OTHERWISE STATED



DO NOT SCALE
IF IN DOUBT PLEASE ASK

CLIENT:
Wilstone

CONTRACT TITLE:
London Bridge

DRAWING TITLE:
Base Section

CONTRACT No.
5258

QUOTATION No.

DRAWING No.
5258-02-01

DRAWN BY
KM

CHECKED BY

FIRST ISSUE DATE
30/05/2018

SHEET
1 of 6

SCALE
1:25

SHEET SIZE
A3 - Landscape

Revision		
A		
Revision		
B		
Revision		
C		
Revision		
D		
Revision		
E		
Revision		
F		

CLIENT APPROVED:

EN 1090 EXC2

YES

NO

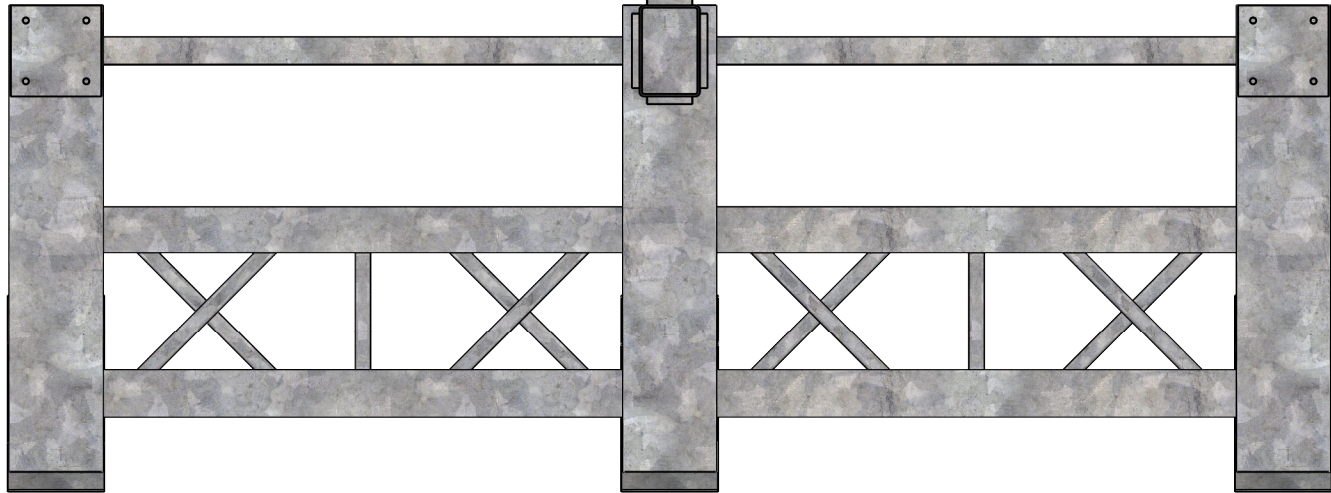
NDT Req'd ?

YES

NO

ASSES MONT^{LD}
STEEL FABRICATION & INSTALLATION
SHOT BLASTING & POWDER COATING

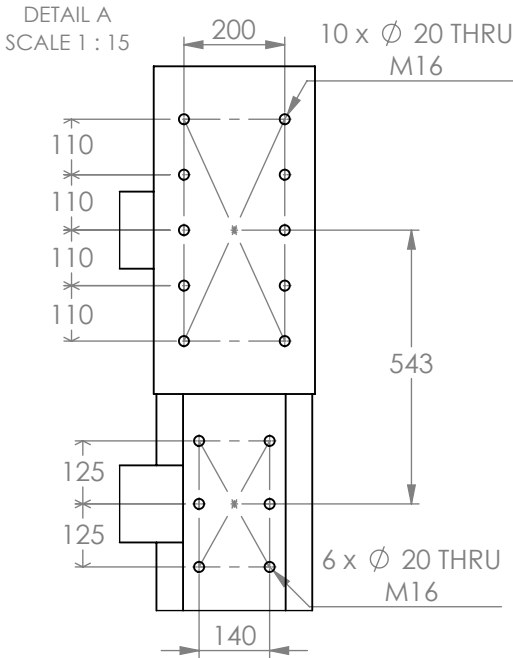
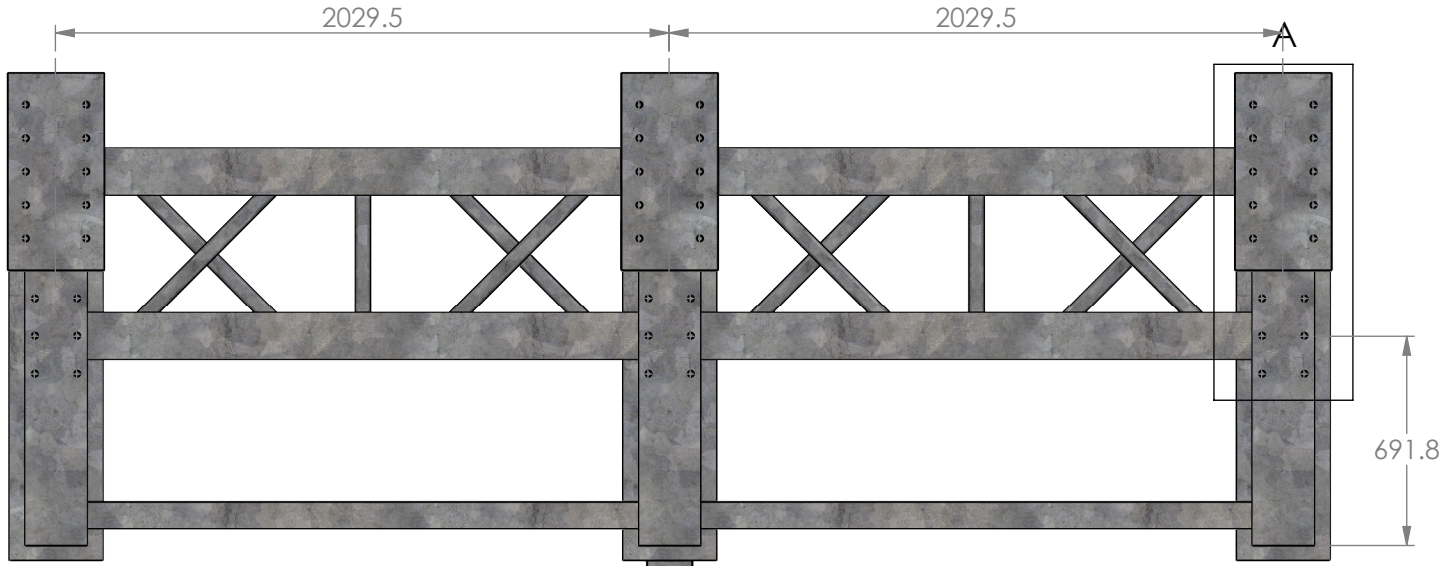
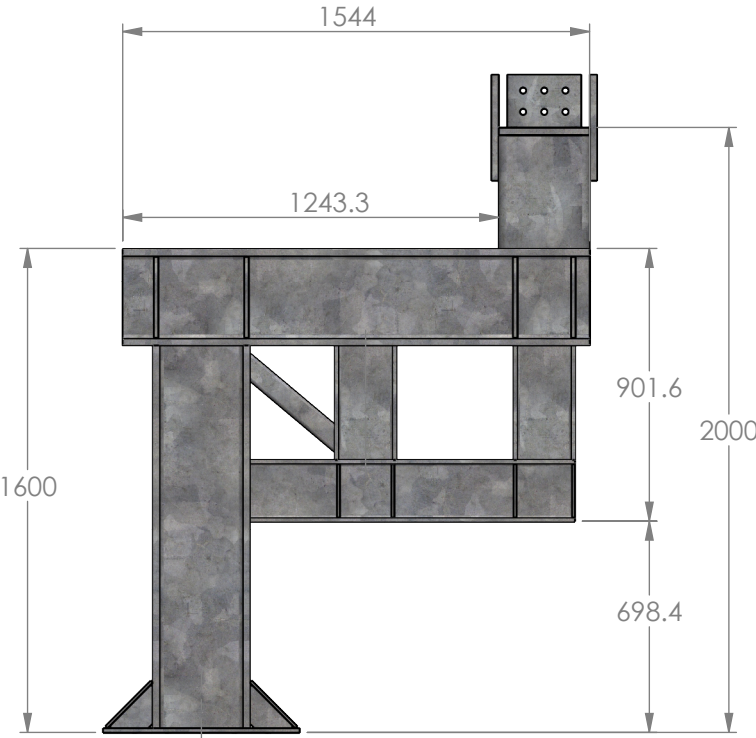
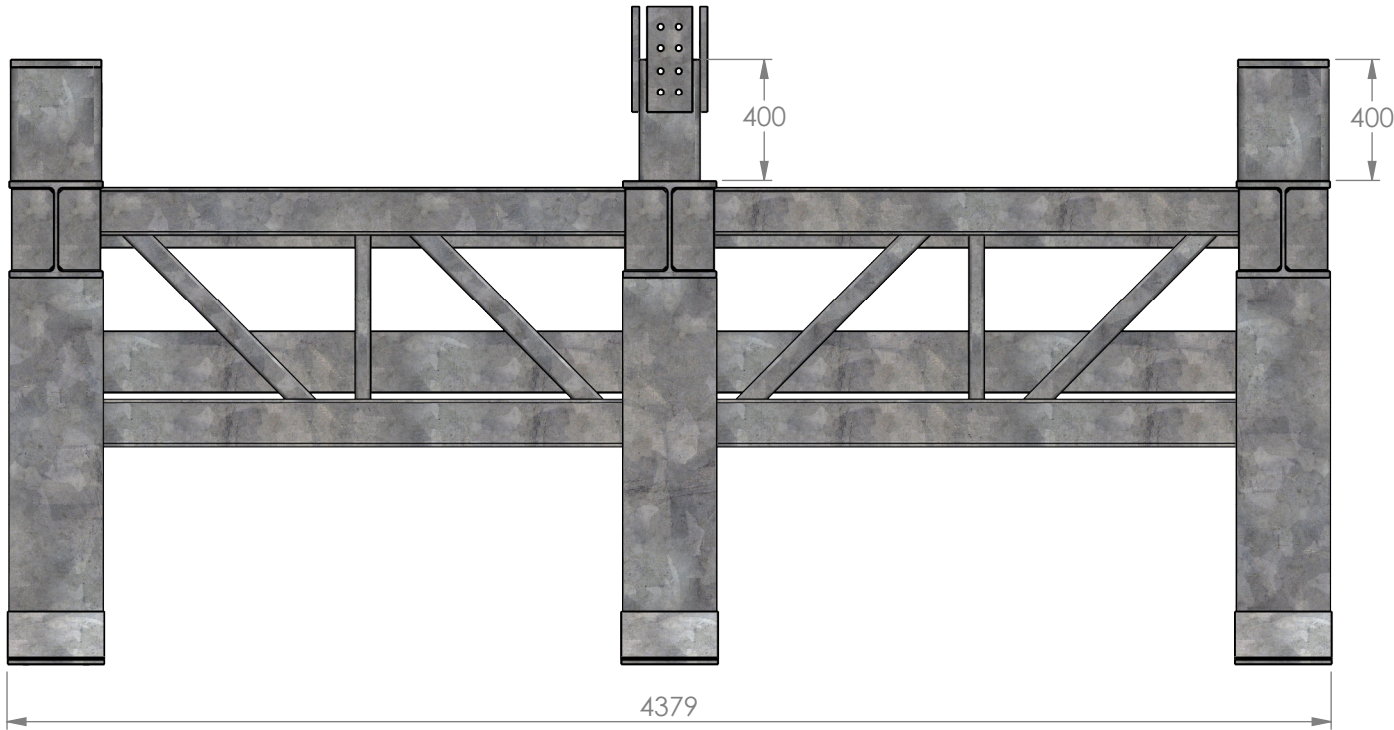
The copyright in this drawing is owned by Assesmont Ltd.
It may not be published or reproduced in any material form
without the express written consent of the Company.



All Welds are to be 8mm Fillet welds
unless otherwise stated

All Steel Grade S355

Galvanised Finish
(2-3mm Allowed on connections)



GENERAL DIM TOLERANCES EXCEPT WHERE STATED
GENERAL ±2.0mm Length / ±1.0mm Hole-Hole
ANGULAR ±0°30'

ALL DIMENSIONS IN MILLIMETRES
UNLESS OTHERWISE STATED

8mm Fillet Weld (z) WPS1
UNLESS OTHERWISE STATED

DO NOT SCALE
IF IN DOUBT PLEASE ASK

THIRD ANGLE PROJECTION

CLIENT:
Wilstone

CONTRACT TITLE:
London Bridge

DRAWING TITLE:
Base Section

CONTRACT No. **5258** QUOTATION No.

DRAWING No.
5258-02-01

DRAWN BY **KM** CHECKED BY

FIRST ISSUE DATE **30/05/2018** SHEET **2 of 6**

SCALE **1:25** SHEET SIZE **A3 - Landscape**

Revision		
A		
Revision		
B		
Revision		
C		
Revision		
D		
Revision		
E		
Revision		
F		

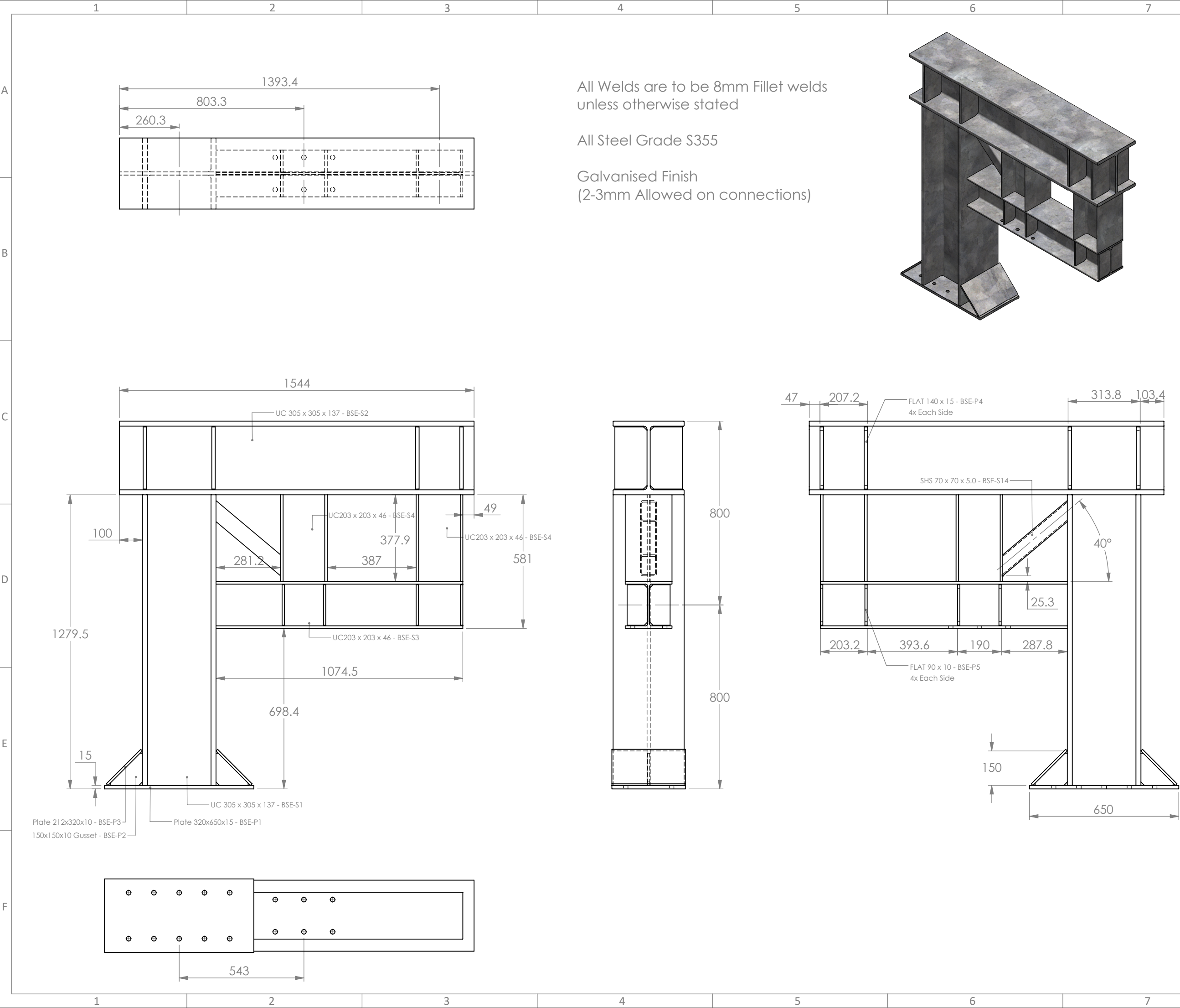
CLIENT APPROVED:

EN 1090 EXC2 YES NO

NDT Req'd ? YES NO





The copyright in this drawing is owned by Assesmont Ltd.
It may not be published or reproduced in any material form
without the express written consent of the Company.

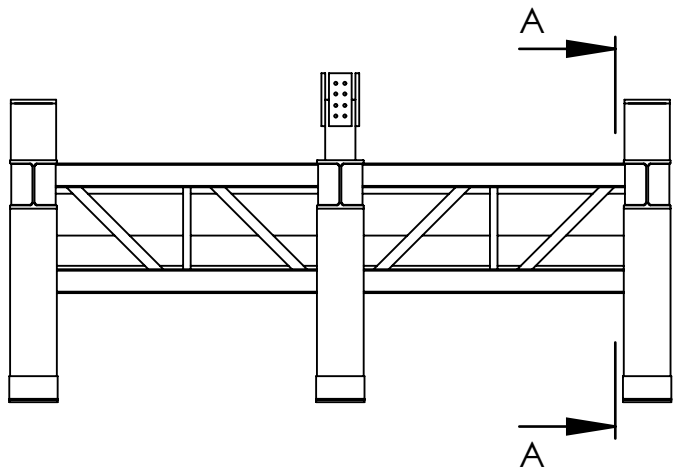


All Welds are to be 8mm Fillet welds
unless otherwise stated

All Steel Grade S355

Galvanised Finish
(2-3mm Allowed on connections)

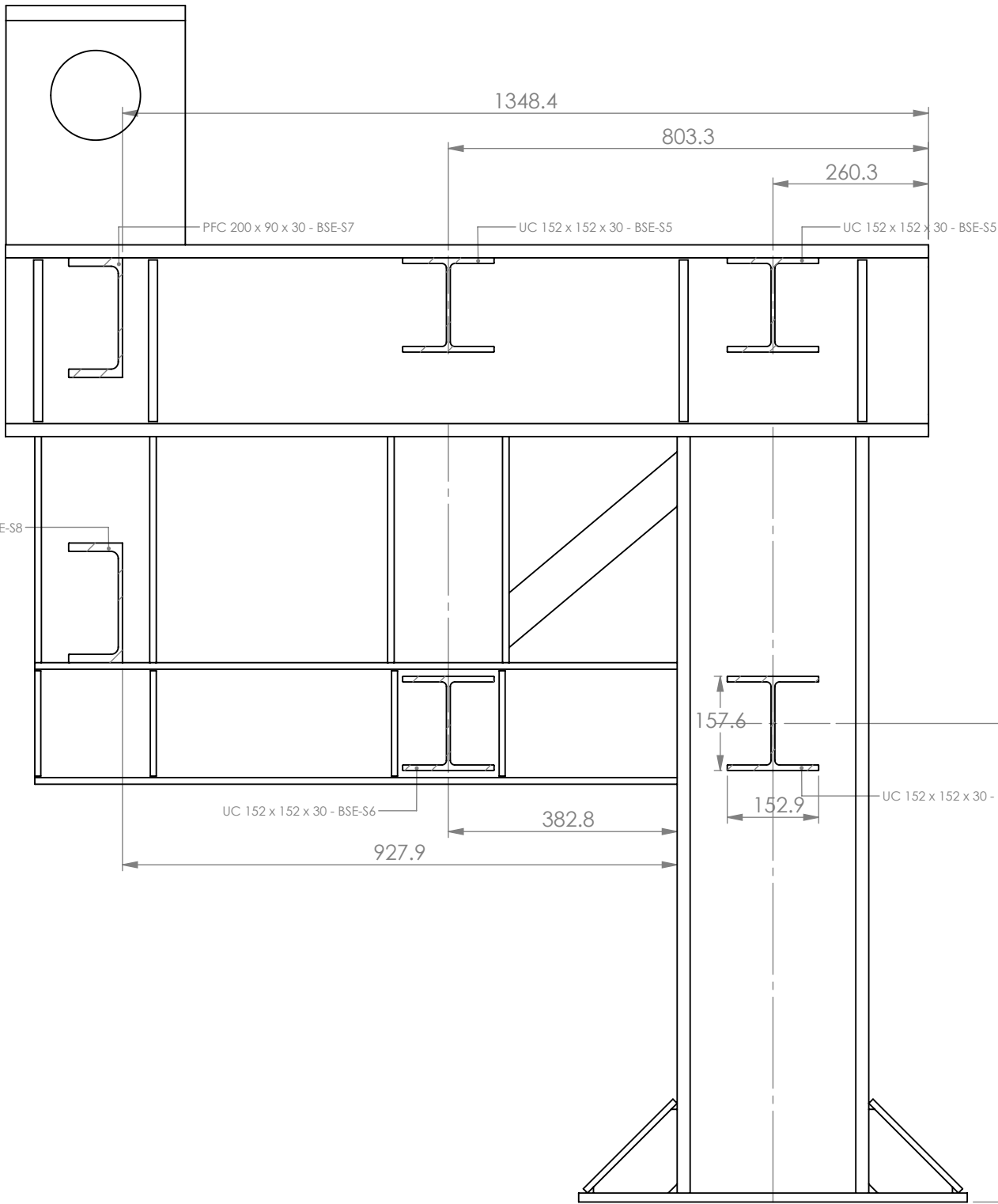
GENERAL DIMN TOLERANCES EXCEPT WHERE STATED		
GENERAL	±2.0mm Length / ±1.0mm Hole-Hole	
ANGULAR	±0°30'	
ALL DIMENSIONS IN MILLIMETRES UNLESS OTHERWISE STATED		
8mm Fillet Weld (z) WPS1 UNLESS OTHERWISE STATED		
<div>THIRD ANGLE PROJECTION</div> <div></div>		
DO NOT SCALE IF IN DOUBT PLEASE ASK		
CLIENT: Wilstone		
CONTRACT TITLE: London Bridge		
DRAWING TITLE: Base Section		
CONTRACT No. 5258		QUOTATION No.
DRAWING No. 5258-02-01		
DRAWN BY KM		CHECKED BY
FIRST ISSUE DATE 30/05/2018		SHEET 3 of 6
SCALE 1:15		SHEET SIZE A3 - Landscape
Revision		
A		
Revision		
B		
Revision		
C		
Revision		
D		
Revision		
E		
Revision		
F		
CLIENT APPROVED:		
EN 1090 EXC2	YES	NO
NDT Req'd ?	YES	NO
<div> ASSESMONT^{TD} STEEL FABRICATION & INSTALLATION SHOT BLASTING & POWDER COATING</div> <div>The copyright in this drawing is owned by Assesmont Ltd. It may not be published or reproduced in any material form without the express written consent of the Company.</div>		



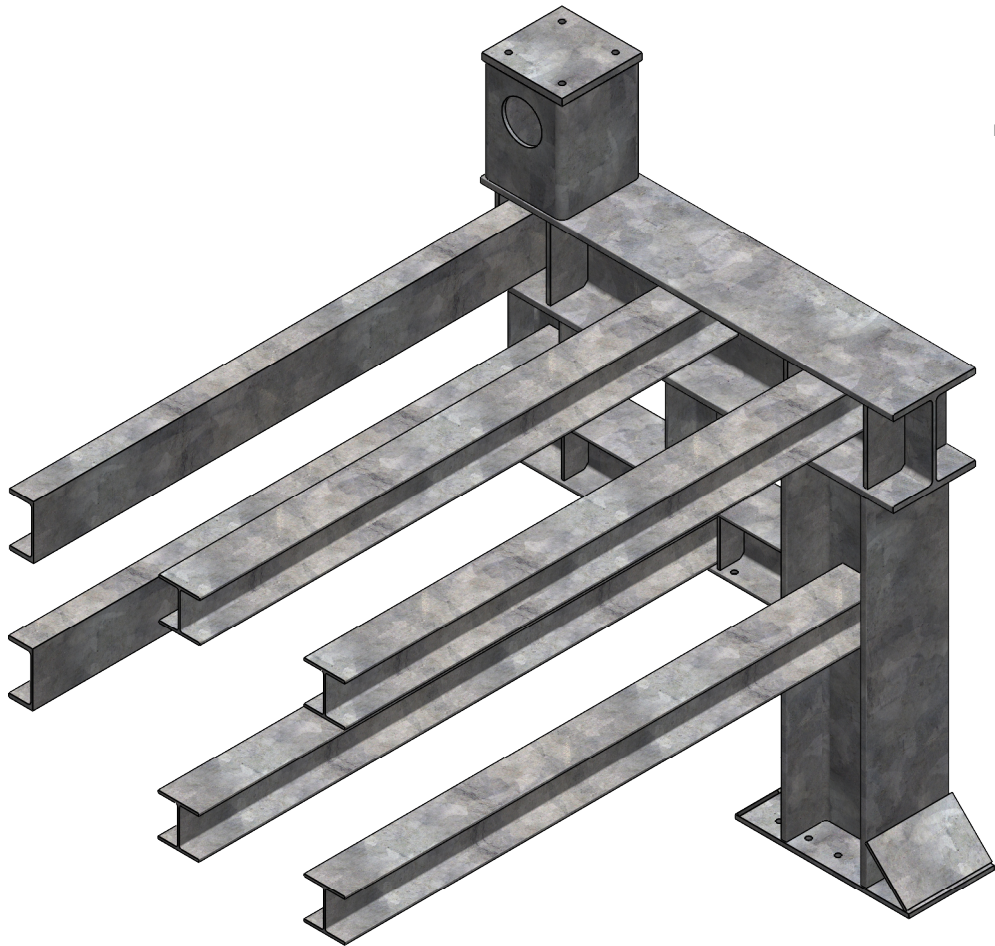
All Welds are to be 8mm Fillet welds
unless otherwise stated

All Steel Grade S355

Galvanised Finish
(2-3mm Allowed on connections)



SECTION A-A



GENERAL DIMM TOLERANCES EXCEPT WHERE STATED

GENERAL	±2.0mm Length / ±1.0mm Hole-Hole
ANGULAR	±0°30'

ALL DIMENSIONS IN MILLIMETRES
UNLESS OTHERWISE STATED

8mm Fillet Weld (z) WPS1
UNLESS OTHERWISE STATED

DO NOT SCALE
IF IN DOUBT PLEASE ASK

THIRD ANGLE PROJECTION

CLIENT:
Wilstone

CONTRACT TITLE:
London Bridge

DRAWING TITLE:
Base Section

CONTRACT No.	QUOTATION No.
5258	

DRAWING No.	
5258-02-01	

DRAWN BY	CHECKED BY
KM	

FIRST ISSUE DATE	SHEET
30/05/2018	4 of 6

SCALE	SHEET SIZE
1:10	A3 - Landscape

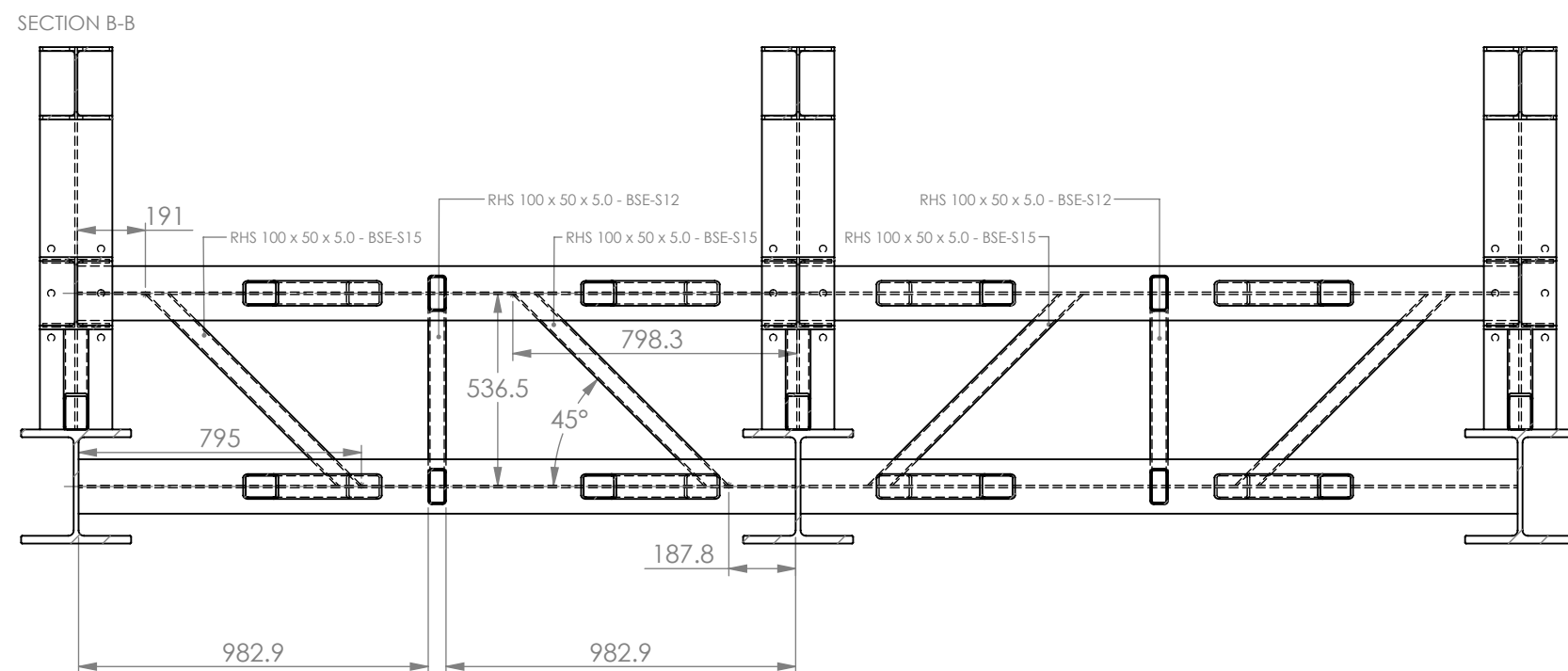
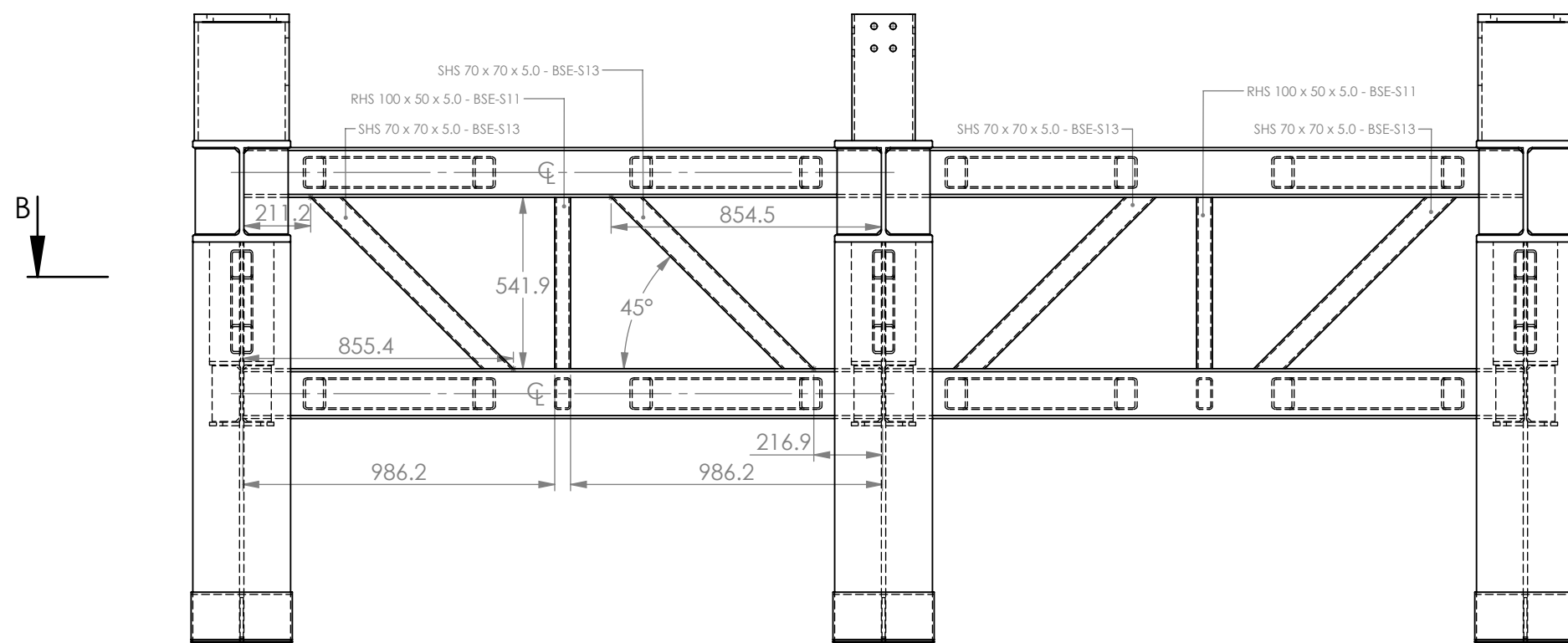
Revision		
A		
Revision		
B		
Revision		
C		
Revision		
D		
Revision		
E		
Revision		
F		

CLIENT APPROVED:

EN 1090 EXC2	YES	NO
NDT Req'd ?	YES	NO



The copyright in this drawing is owned by Assesmont Ltd.
It may not be published or reproduced in any material form
without the express written consent of the Company.



All Welds are to be 8mm Fillet welds unless otherwise stated

All Steel Grade S355

Galvanised Finish
(2-3mm Allowed on connections)

GENERAL DIMM TOLERANCES EXCEPT WHERE STATED


GENERAL $\pm 2.0\text{mm}$ Length / $\pm 1.0\text{mm}$ Hole-Hole
ANGULAR $\pm 0^{\circ}30'$

ALL DIMENSIONS IN MILLIMETRES
UNLESS OTHERWISE STATED

8mm Fillet Weld (z) WPS1
UNLESS OTHERWISE STATED

DO NOT SCALE
IF IN DOUBT PLEASE ASK

THIRD ANGLE PROJECTION



CLIENT:
Wilstone

CONTRACT TITLE:

London Bridge

DRAWING TITLE:

Base Section

CONTRACT No. 5258	QUOTATION No.
-----------------------------	---------------

DRAWING No.
5258-02-01

DRAWN BY	CHECKED BY
KM	

FIRST ISSUE DATE	SHEET
30/05/2018	5 of 6

SCALE	SHEET SIZE
1:20	A3 - Landscape

Revision		
A		
Revision		
B		
Revision		
C		
Revision		
D		
Revision		
E		
Revision		
F		

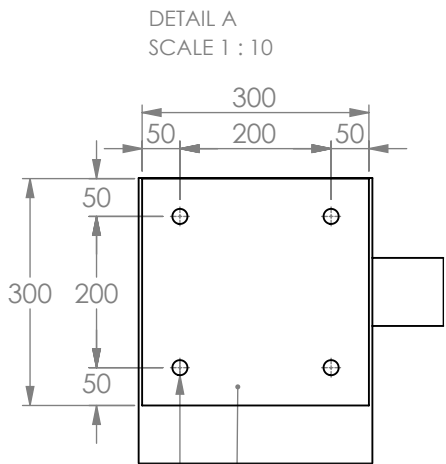
CLIENT APPROVED:

EN 1090 EXC2	YES	NO
--------------	-----	----

NDT Req'd ?	YES	NO
-------------	-----	----

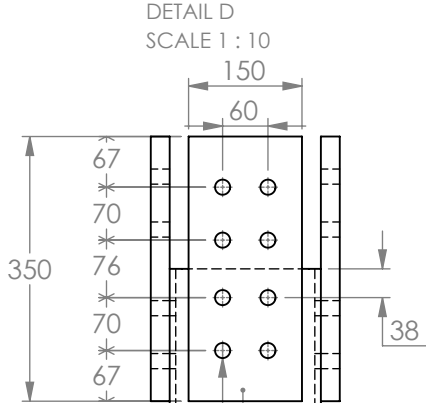
 **ASSESMONT**^{LTD}
STEEL FABRICATION & INSTALLATION
SHOT BLASTING & POWDER COATING

The copyright in this drawing is owned by Assesmont Ltd.
It may not be published or reproduced in any material form
without the express written consent of the Company.



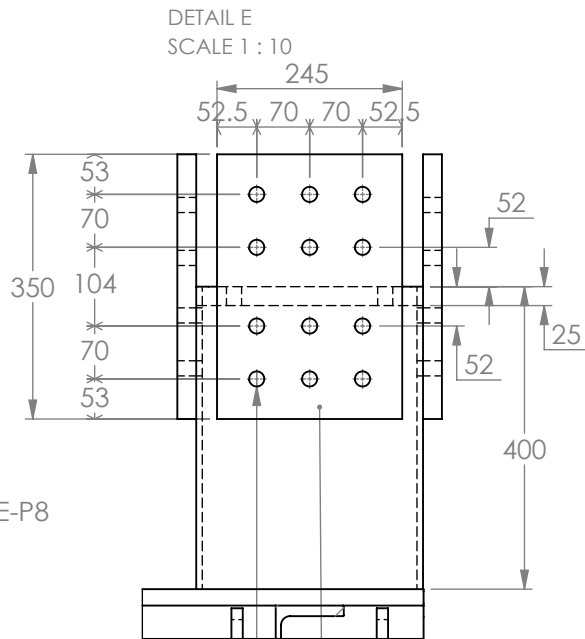
FLAT 300 x 25 - BSE-P6

4 x Ø 20 THRU
Tension Control
Bolts - 16mm



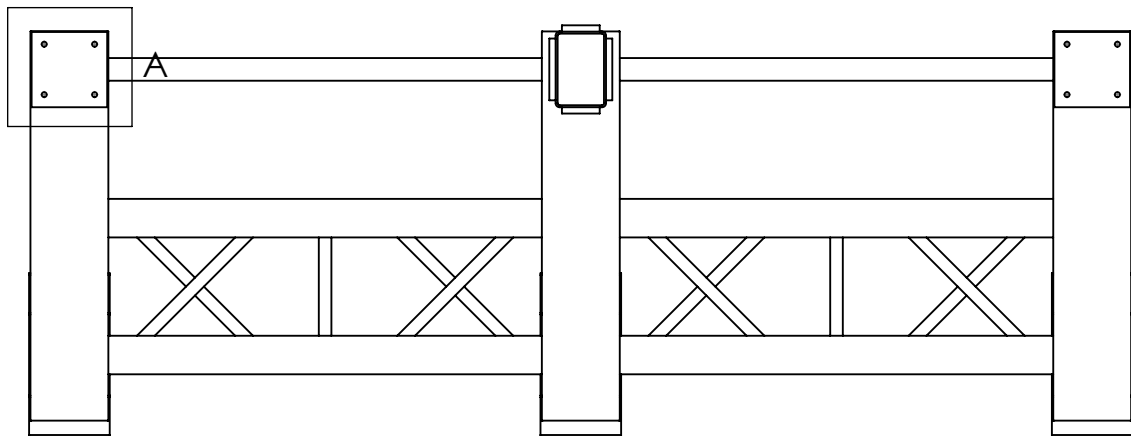
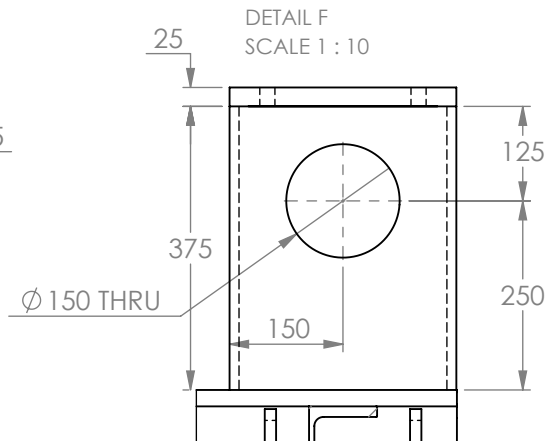
FLAT 350 x 25 - BSE-P8
Both Sides

8 x Ø 20 THRU
Tension Control
Bolts - 16mm



12 x Ø 20 THRU
Tension Control
Bolts - 16mm

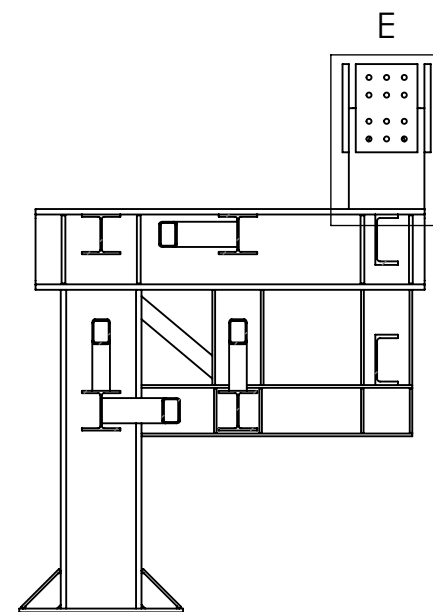
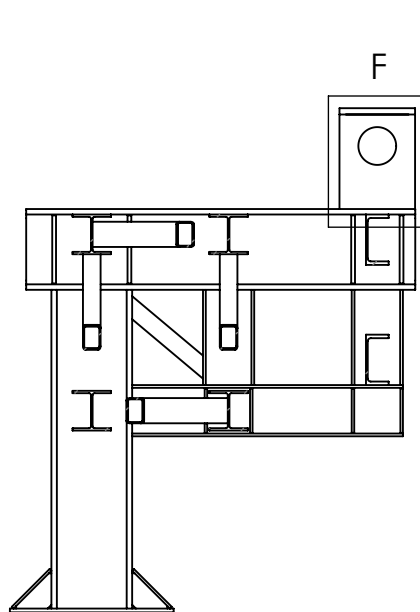
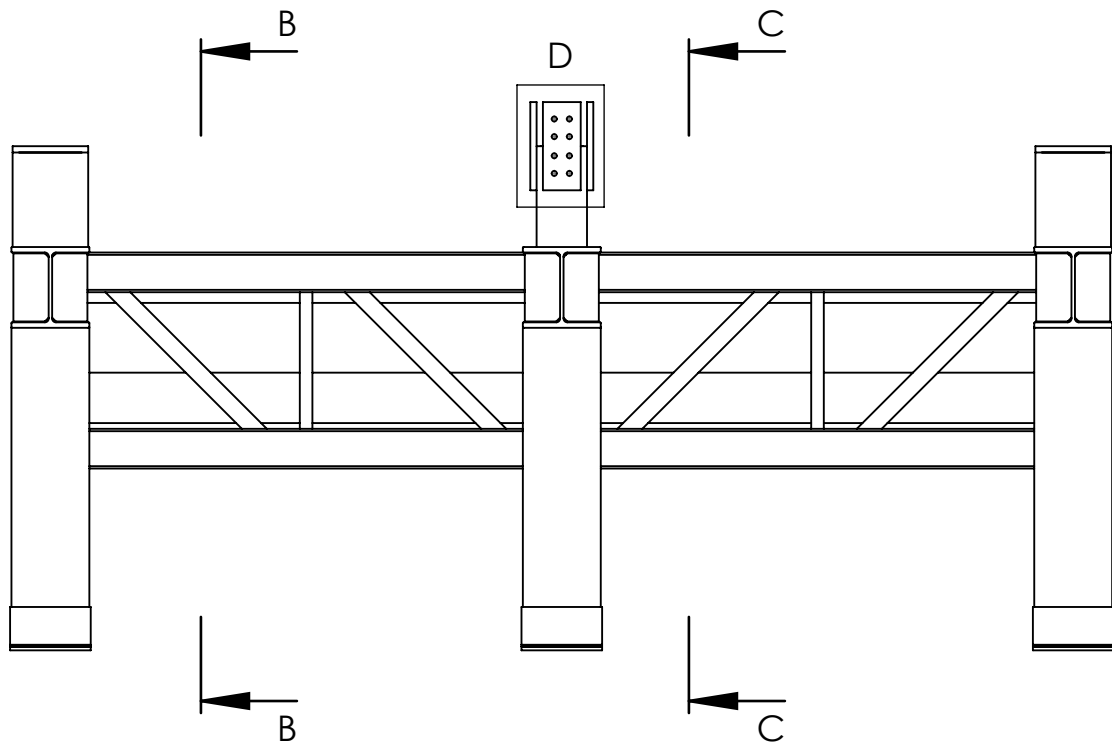
FLAT 350 x 25 - BSE-P7



All Welds are to be 8mm Fillet welds
unless otherwise stated

All Steel Grade S355

Galvanised Finish
(2-3mm Allowed on connections)

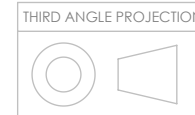


GENERAL DIMN TOLERANCES EXCEPT WHERE STATED
GENERAL ±2.0mm Length / ±1.0mm Hole-Hole
ANGULAR ±0°30'

ALL DIMENSIONS IN MILLIMETRES
UNLESS OTHERWISE STATED

8mm Fillet Weld (z) WPS1
UNLESS OTHERWISE STATED

DO NOT SCALE
IF IN DOUBT PLEASE ASK



CLIENT:

Wilstone

CONTRACT TITLE:

London Bridge

DRAWING TITLE:

Base Section

CONTRACT No.

5258

QUOTATION No.

DRAWING No.

5258-02-01

DRAWN BY

KM

CHECKED BY

FIRST ISSUE DATE

30/05/2018

SHEET

6 of 6

SCALE

1:30

SHEET SIZE

A3 - Landscape

Revision

A

Revision

B

Revision

C

Revision

D

Revision

E

Revision

F

CLIENT APPROVED:

EN 1090 EXC2

YES

NO

NDT Req'd ?

YES

NO

ASSES MONT^{LD}
STEEL FABRICATION & INSTALLATION
SHOT BLASTING & POWDER COATING

The copyright in this drawing is owned by Assesmont Ltd.
It may not be published or reproduced in any material form
without the express written consent of the Company.