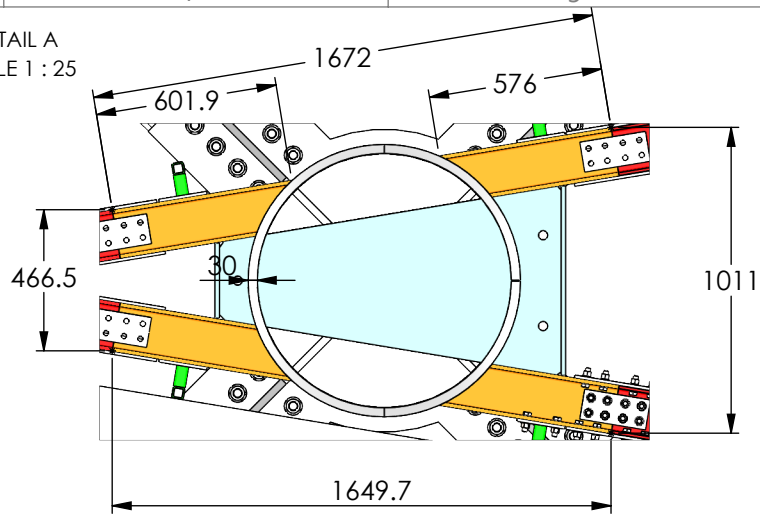


DETAIL A
SCALE 1 : 25



General Notes

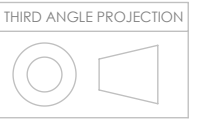
- Fabricated to Execution Class 2
- All Steelwork to be CE marked and fabricated in accordance with the NSSS 'CE Marking' Edition
- All steel work (Above Foundation) is to be of Grade S355-J2, unless otherwise specified
- Welding to comply with BS EN 288
- All Bolts to be Grade 8.8 in accordance with BS 3692 and Hot Dip spun galvanized to comply with EN ISO 1461 unless noted

GENERAL DIMN TOLERANCES EXCEPT WHERE STATED
GENERAL ±2.0mm Length / ±1.0mm Hole-Hole
ANGULAR ±0°30'

ALL DIMENSIONS IN MILLIMETRES
UNLESS OTHERWISE STATED

7mm Fillet Weld (z) WPS1
UNLESS OTHERWISE STATED

DO NOT SCALE
IF IN DOUBT PLEASE ASK



CLIENT:

Wildstone

CONTRACT TITLE:

Shah Jalal Advertising Structure

DRAWING TITLE:

General Arrangement

CONTRACT No.

5384

QUOTATION No.

DRAWING No.

5384-02-01

DRAWN BY

KM

CHECKED BY

FIRST ISSUE DATE

07/12/2018

SHEET

1 of 4

SCALE

1:80

SHEET SIZE

A3 - Landscape

Revision

A

13/12/2018

KM

Tiebar in V Corner detail added

Revision

B

P18/01/2019

KM

Plate Insert Added on Column,
Tiebars updated

Revision

C

Revision

D

Revision

E

Revision

F

CLIENT APPROVED:

EN 1090 EXC2

YES

NO

EN 1090 EXC3

YES

NO

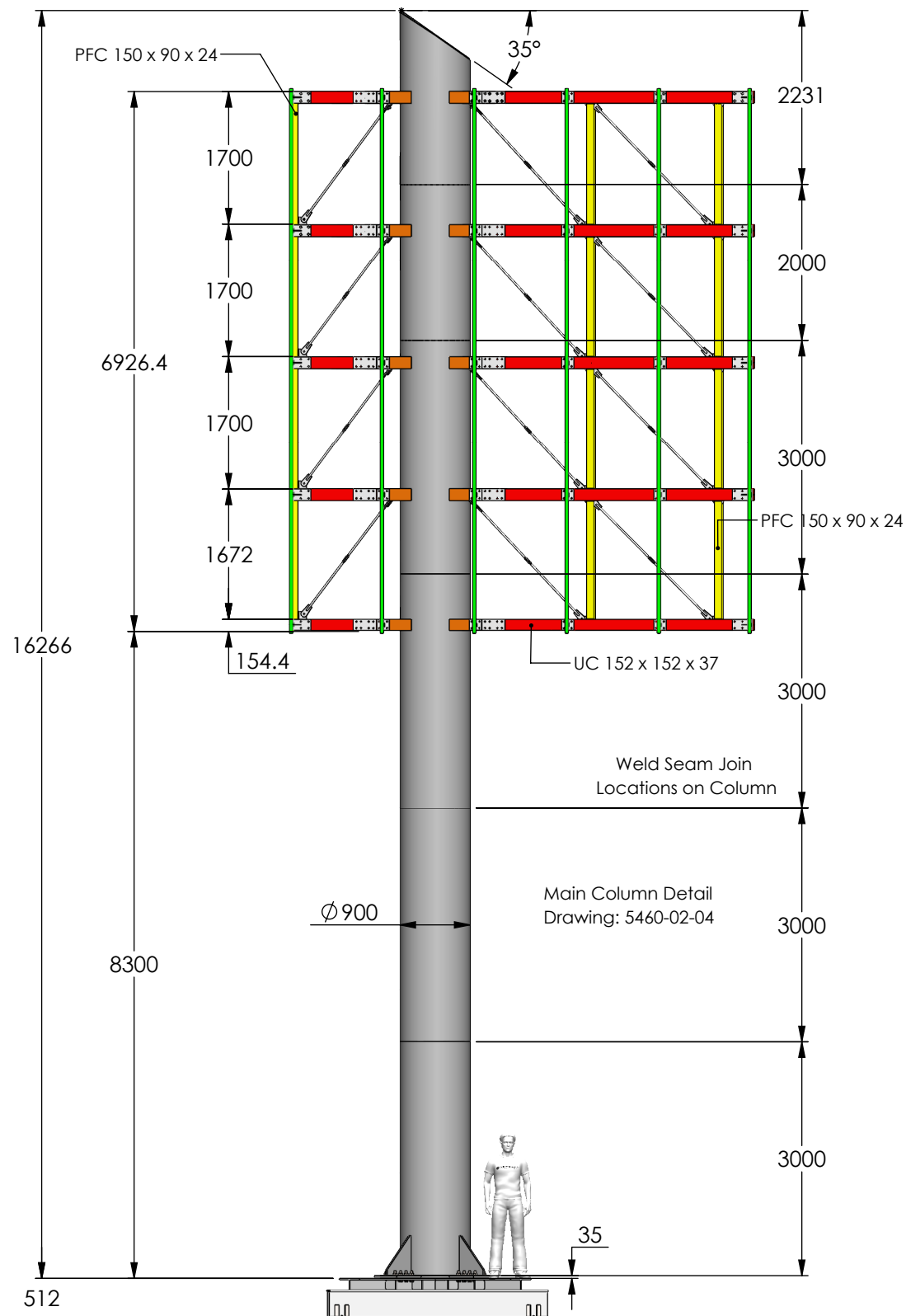
NDT Req'd ?

YES

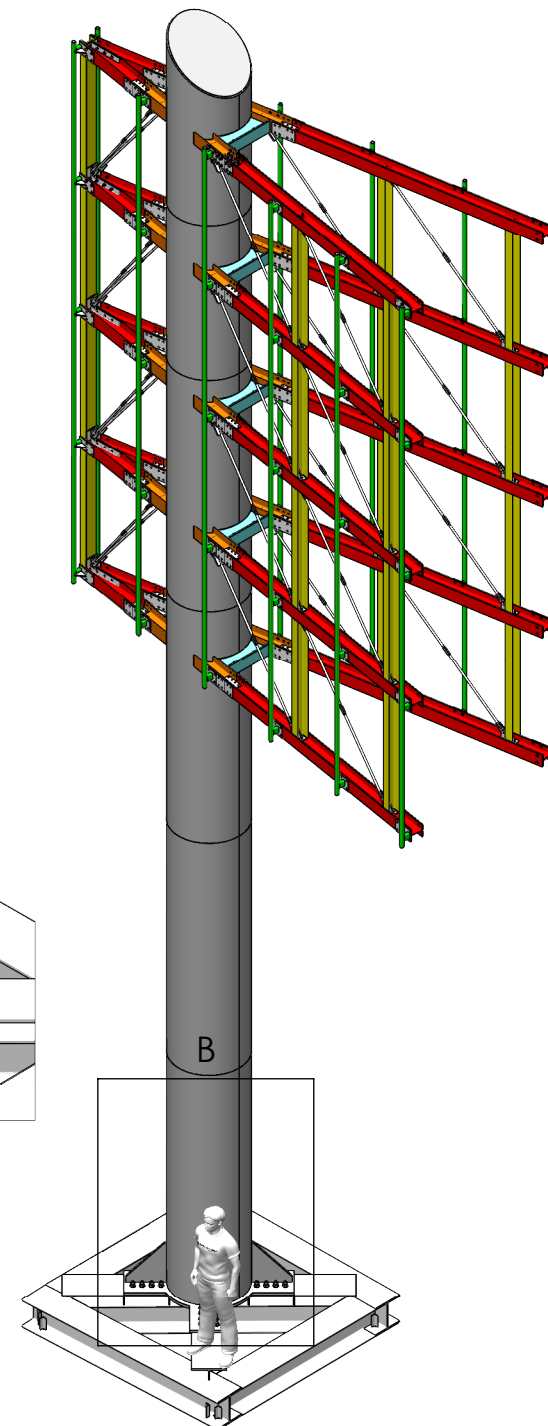
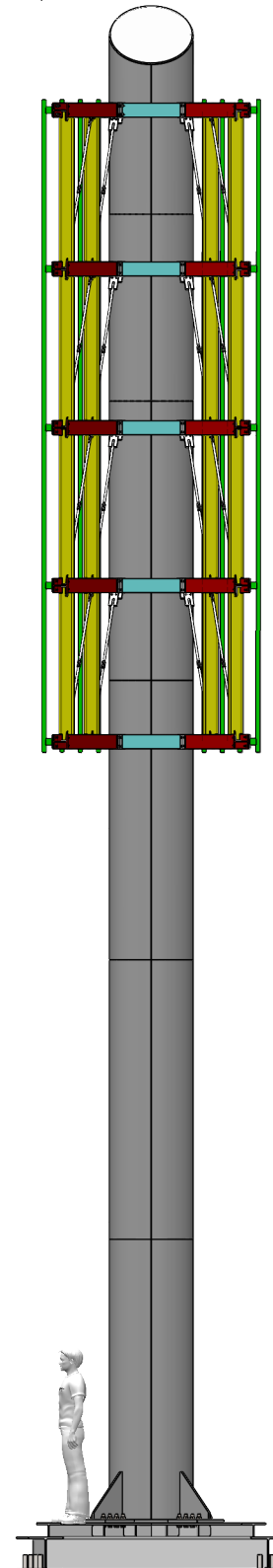
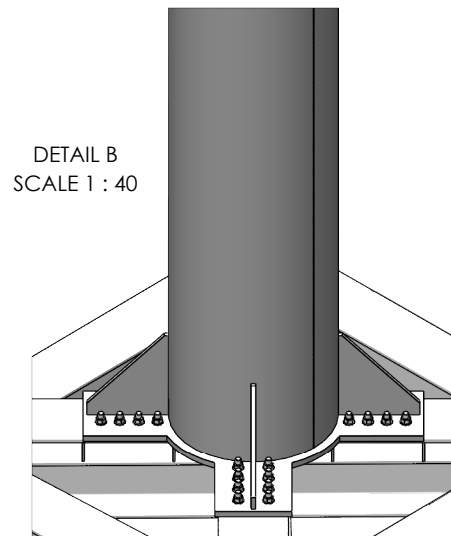
NO

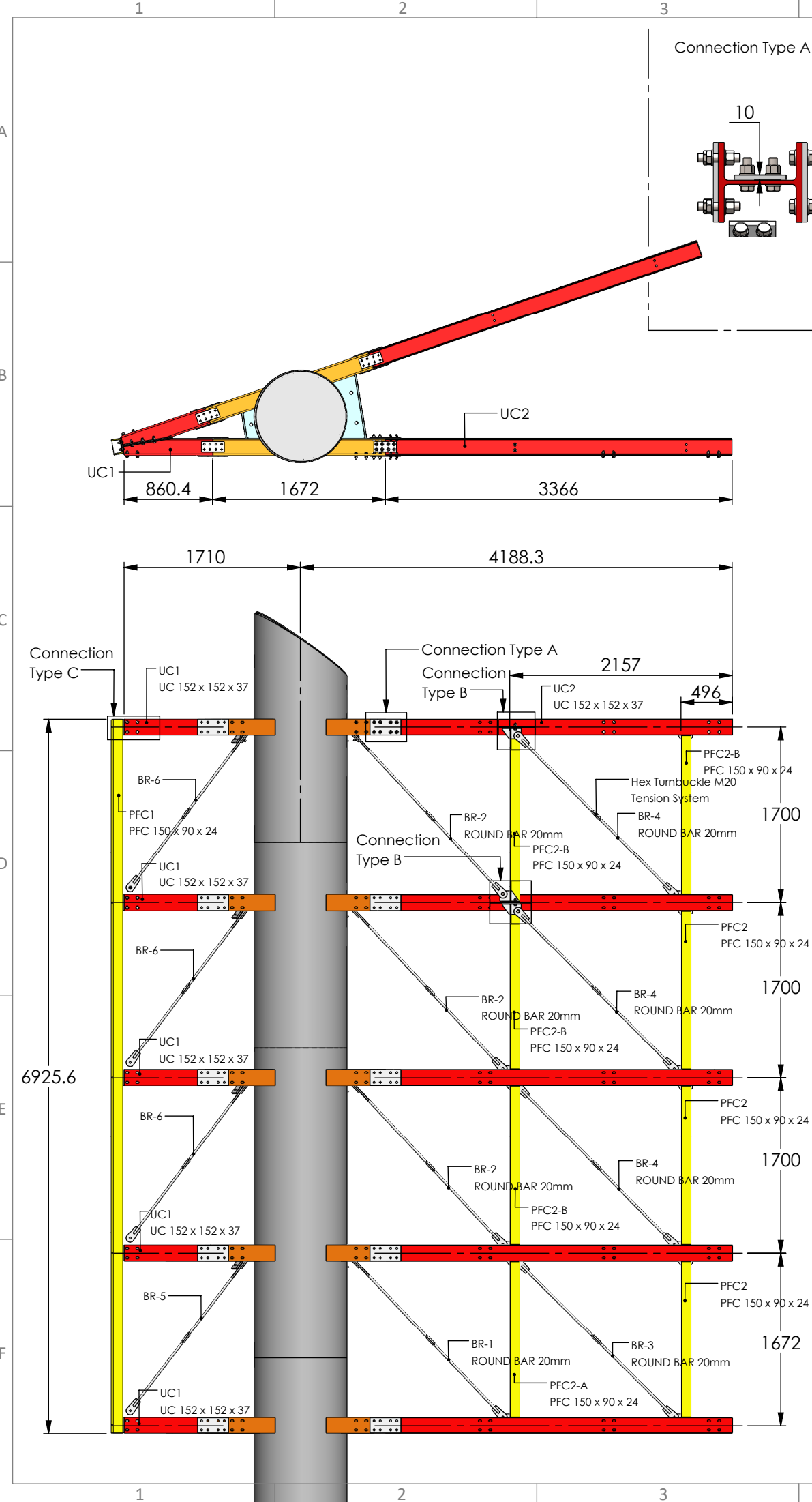
ASSESMONT^{LD}
STEEL FABRICATION & INSTALLATION
SHOT BLASTING & POWDER COATING

The copyright in this drawing is owned by Assesmont Ltd.
It may not be published or reproduced in any material form
without the express written consent of the Company.

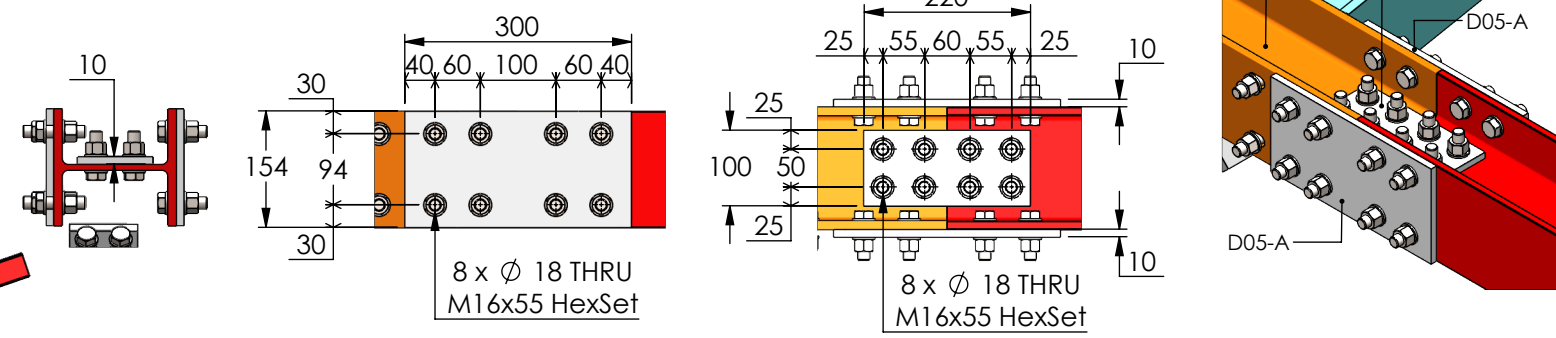


Column Base Detail
Drawing: 5460-02-03

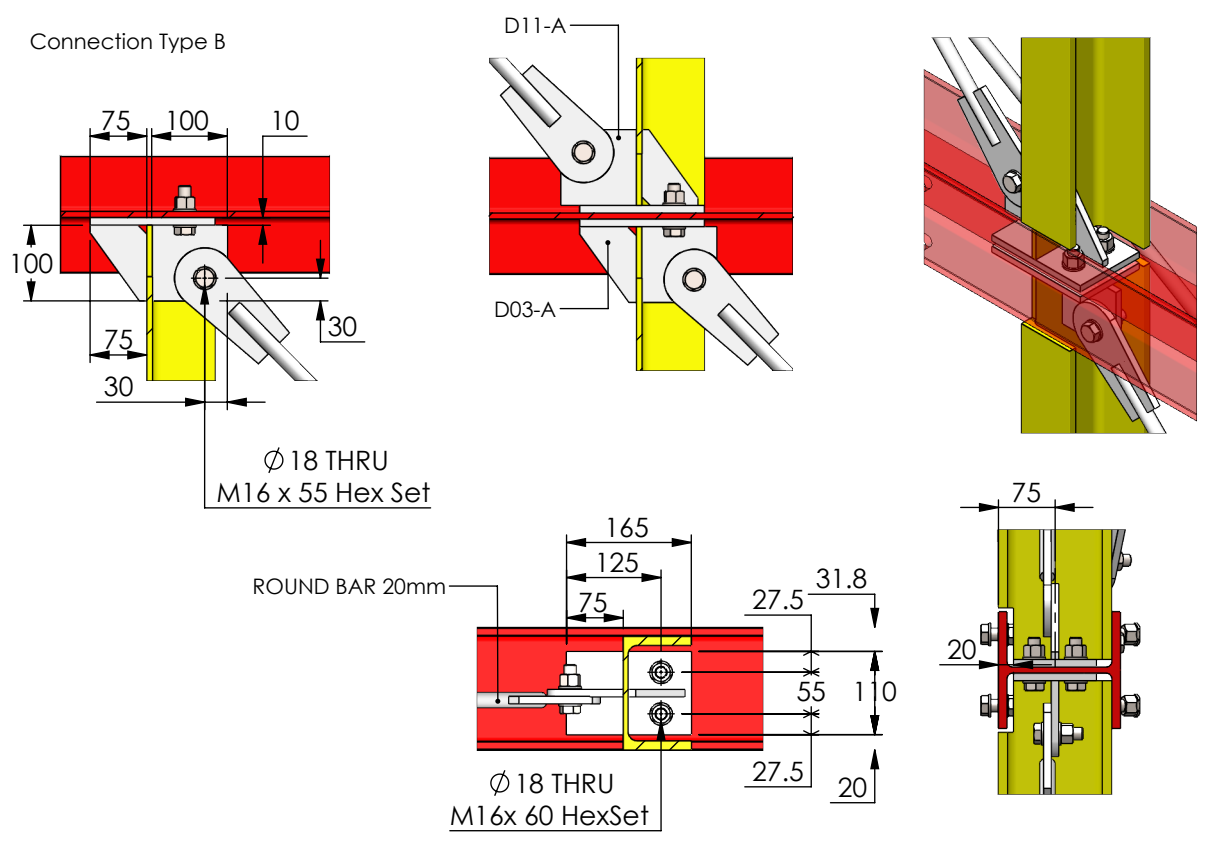




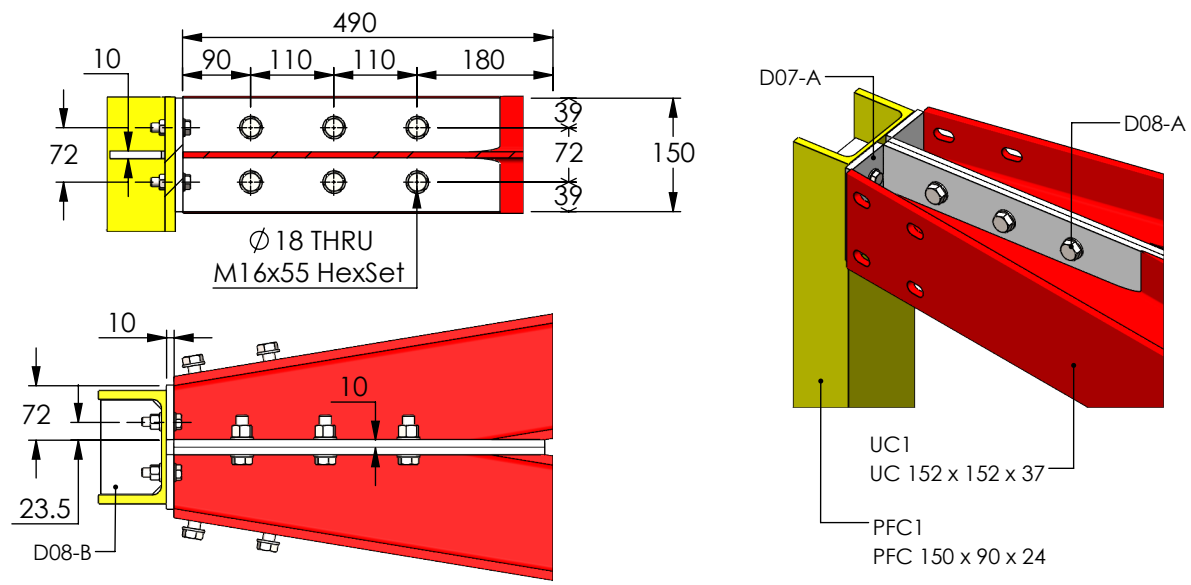
Connection Type A



Connection Type B



Connection Type C



GENERAL DIMM TOLERANCES EXCEPT WHERE STATED
GENERAL ±2.0mm Length / ±1.0mm Hole-Hole
ANGULAR ±0°30'

ALL DIMENSIONS IN MILLIMETRES
UNLESS OTHERWISE STATED

7mm Fillet Weld (z) WPS1
UNLESS OTHERWISE STATED

THIRD ANGLE PROJECTION

DO NOT SCALE
IF IN DOUBT PLEASE ASK

CLIENT:
Wildstone

CONTRACT TITLE:
**Shah Jalal Advertising
Structure**

DRAWING TITLE:
General Arrangement

CONTRACT No. **5384** QUOTATION No.

DRAWING No.
5384-02-01

DRAWN BY **KM** CHECKED BY

FIRST ISSUE DATE **07/12/2018** SHEET **2 of 4**

SCALE **1:50** SHEET SIZE **A3 - Landscape**

Revision **A** 13/12/2018 KM
Tiebar in V Corner detail added

Revision **B** P18/01/2019 KM
Plate Insert Added on Column,
Tiebars updated

Revision **C**

Revision **D**

Revision **E**

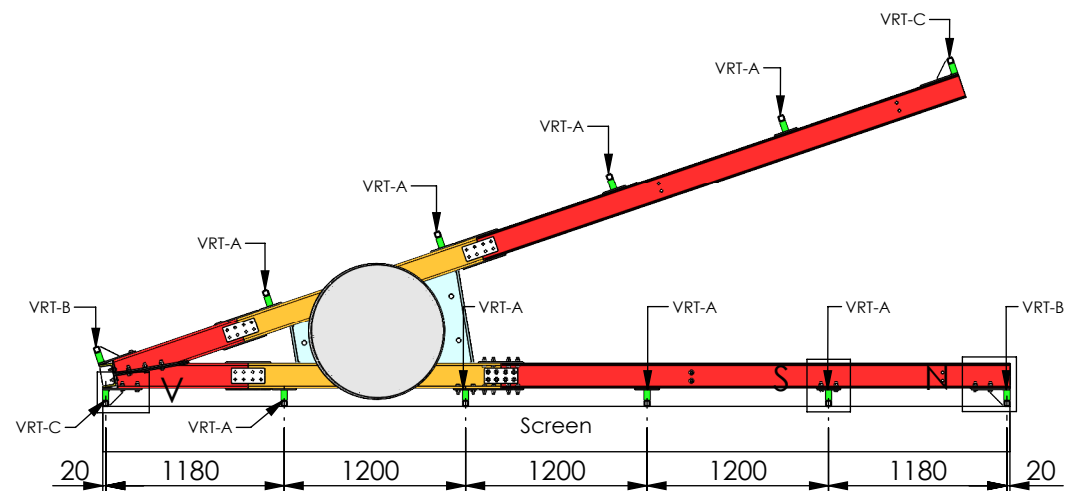
Revision **F**

CLIENT APPROVED:

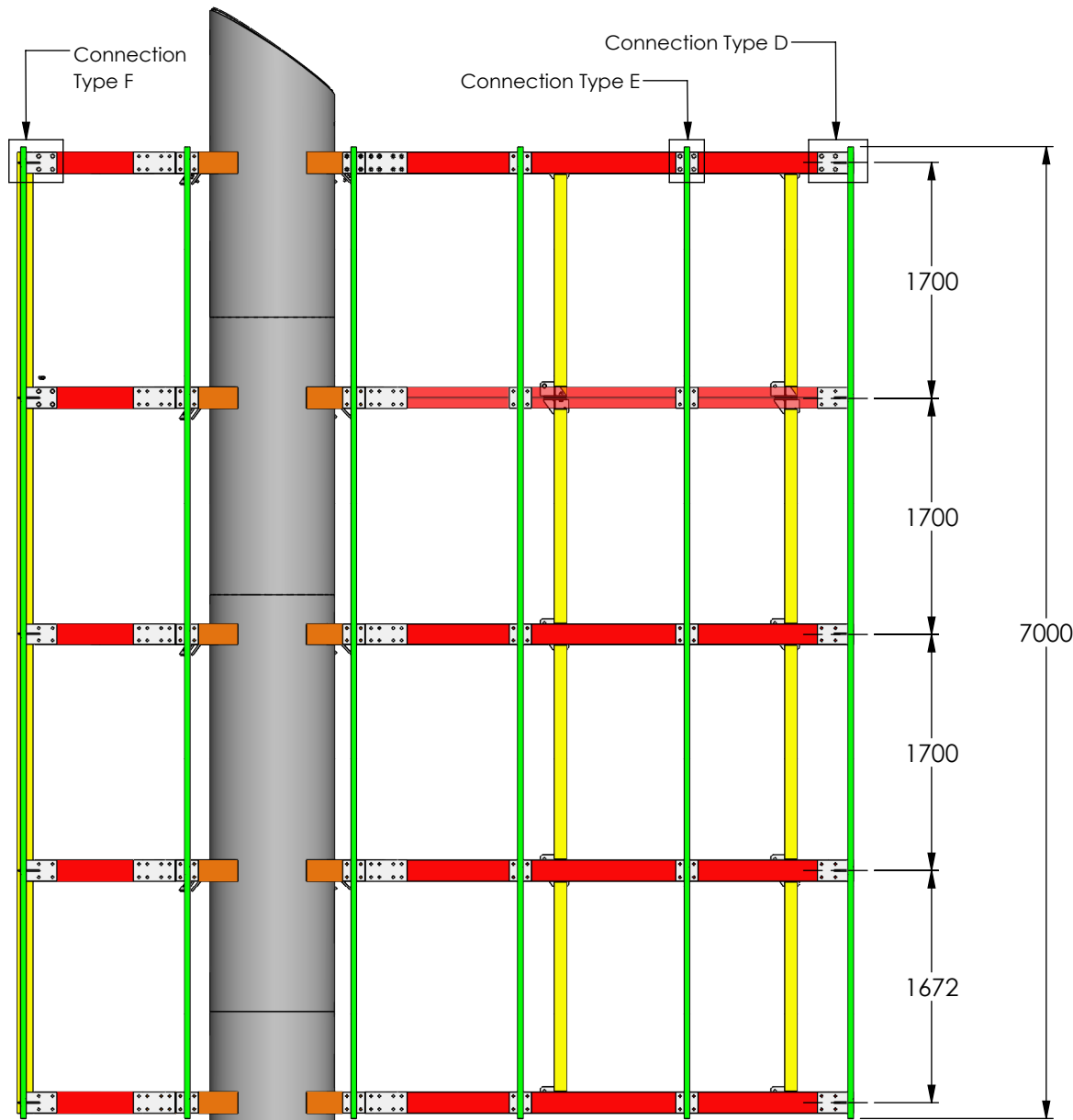
EN 1090 EXC2	YES ✓	NO
EN 1090 EXC3	YES	NO ✓
NDT Req'd ?	YES ✓	NO

ASSESMENT
STEEL FABRICATION & INSTALLATION
SHOT BLASTING & POWDER COATING

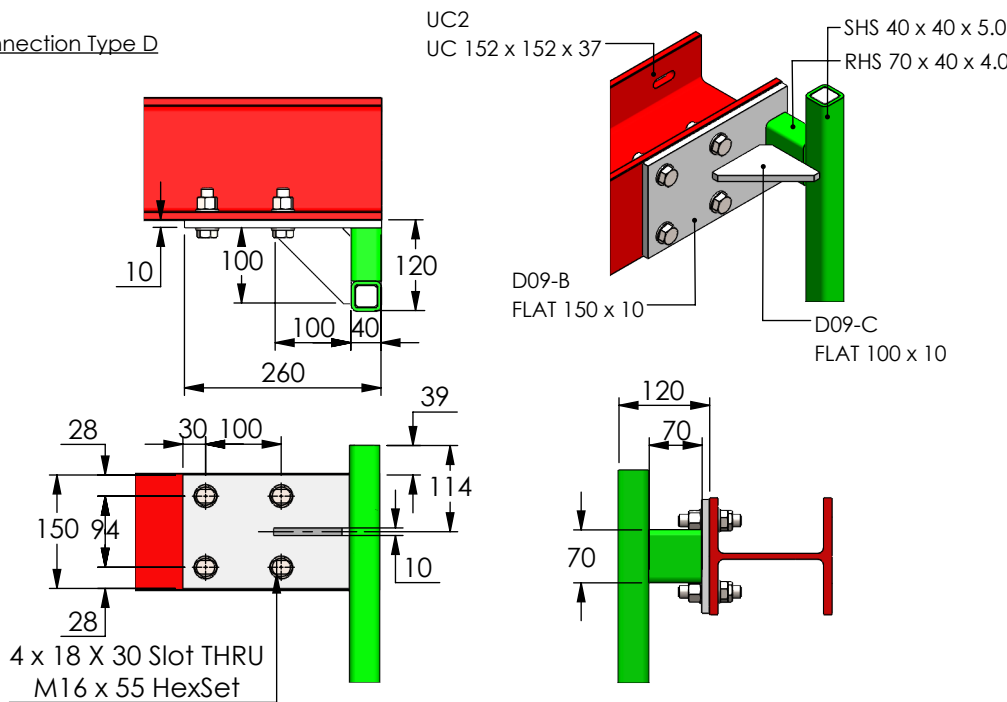
The copyright in this drawing is owned by Assesmont Ltd.
It may not be published or reproduced in any material form
without the express written consent of the Company.



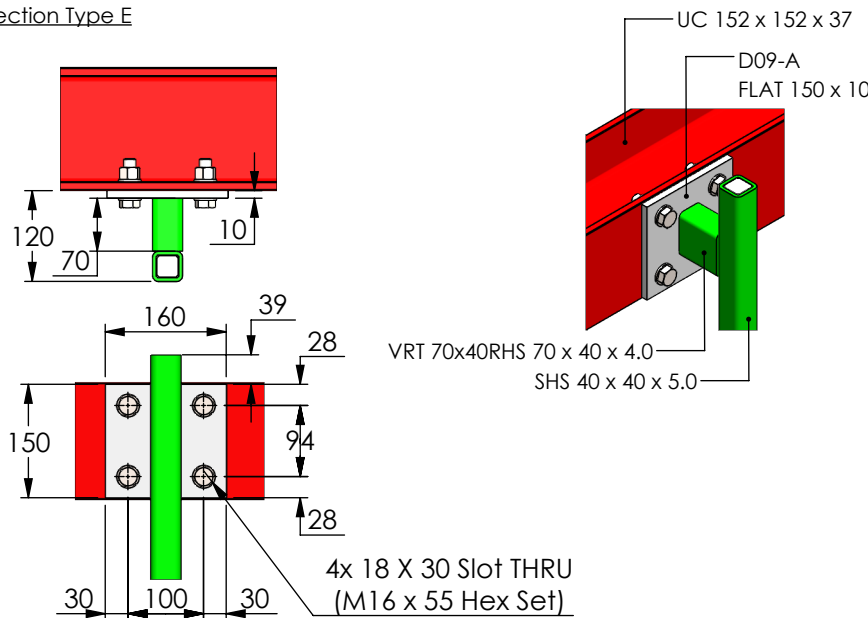
Screen Mount Verticals Detail



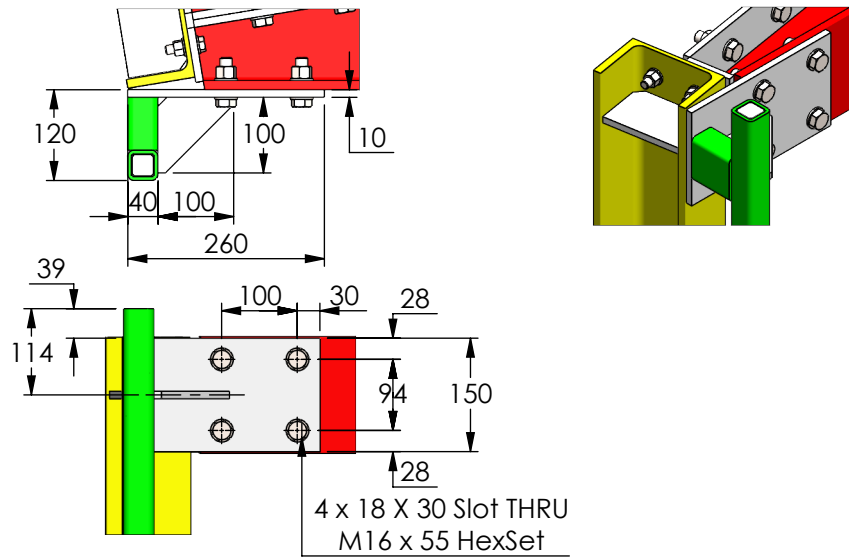
Connection Type D



Connection Type E

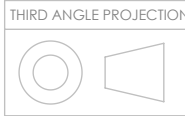


Connection Type F



GENERAL DIMN TOLERANCES EXCEPT WHERE STATED
GENERAL $\pm 2.0\text{mm}$ Length / $\pm 1.0\text{mm}$ Hole-Hole
ANGULAR $\pm 0^\circ 30'$
ALL DIMENSIONS IN MILLIMETRES
UNLESS OTHERWISE STATED
7mm Fillet Weld (z) WPS1
UNLESS OTHERWISE STATED

DO NOT SCALE
IF IN DOUBT PLEASE ASK



CLIENT:

Wildstone

CONTRACT TITLE:

Shah Jalal Advertising
Structure

DRAWING TITLE:

General Arrangement

CONTRACT No.
5384

QUOTATION No.

DRAWING No.

5384-02-01

DRAWN BY

CHECKED BY

KM

FIRST ISSUE DATE

07/12/2018

SHEET

3 of 4

SCALE

1:50

SHEET SIZE

A3 - Landscape

Revision

13/12/2018

KM

A

Tiebar in V Corner detail added

Revision

P18/01/2019

KM

B

Plate Insert Added on Column,
Tiebars updated

Revision

C

Revision

D

Revision

E

Revision

F

CLIENT APPROVED:

EN 1090 EXC2

YES

NO

EN 1090 EXC3

YES

NO

NDT Req'd ?

YES

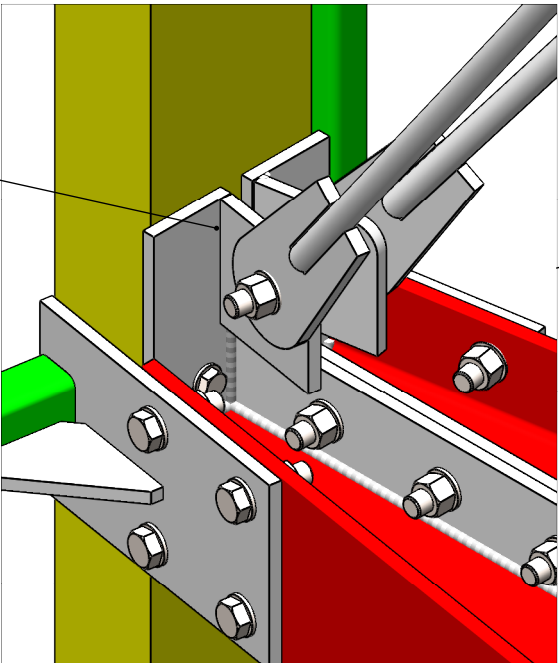
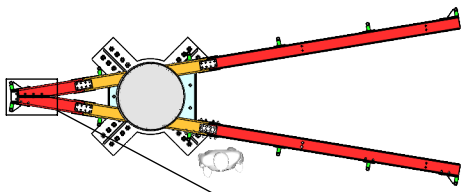
NO

ASSESMENT
STEEL FABRICATION & INSTALLATION
SHOT BLASTING & POWDER COATING

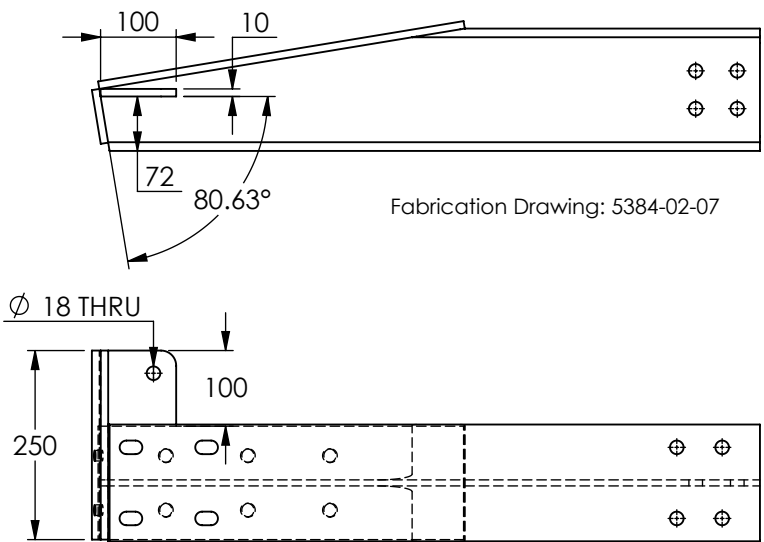
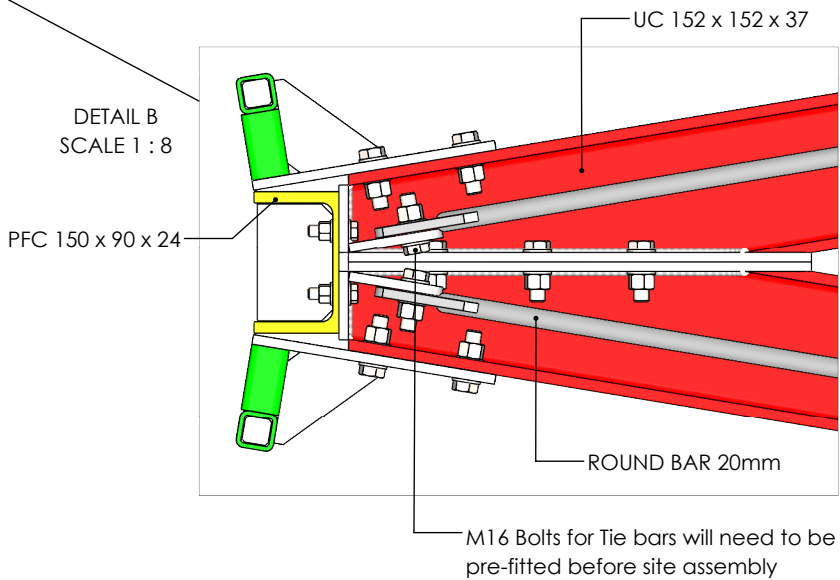
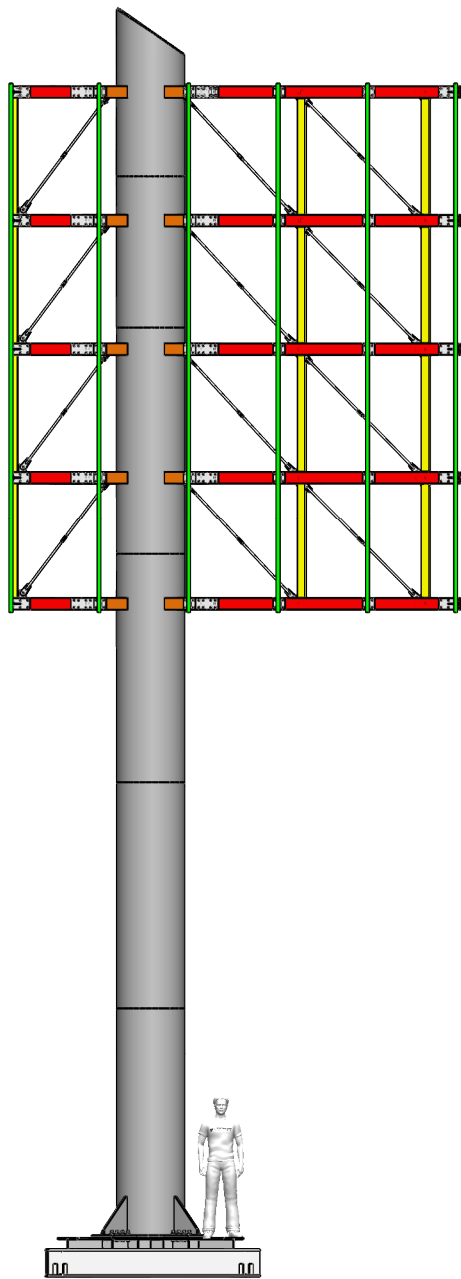
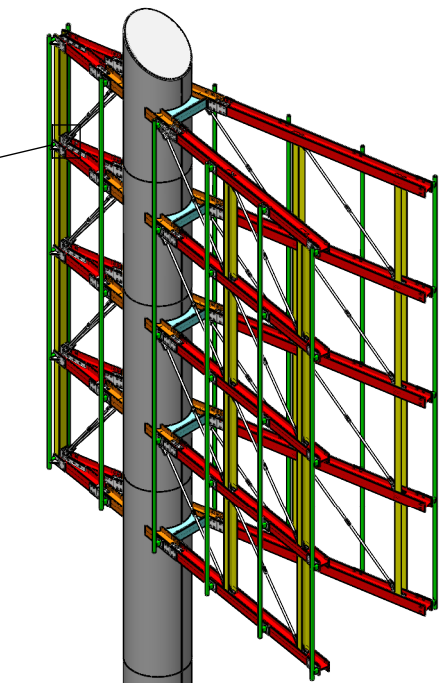
The copyright in this drawing is owned by Assesmont Ltd.
It may not be published or reproduced in any material form
without the express written consent of the Company.

Tie Bar in V Corner Detail

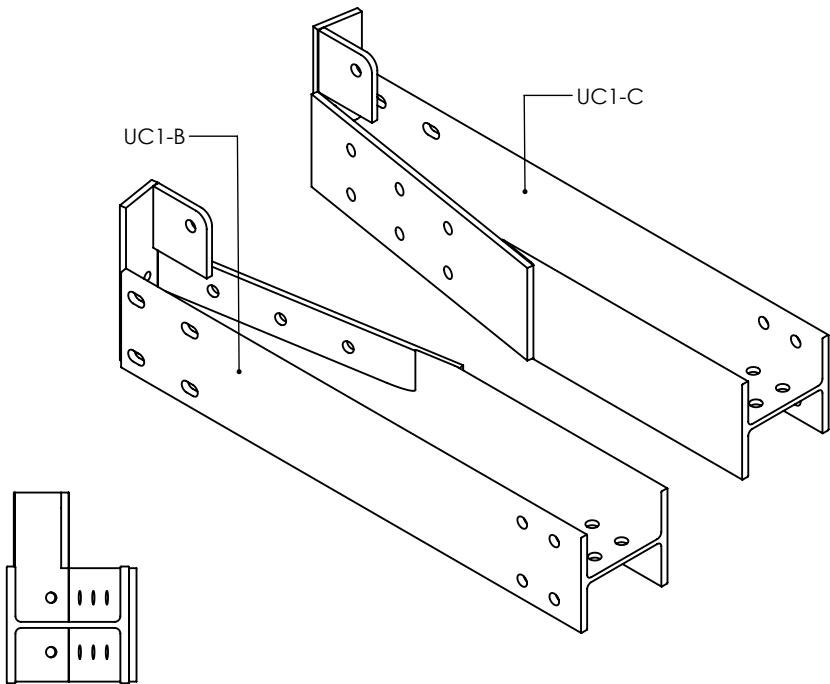
Bracing plate to be fully welded to extended UC end connection plate



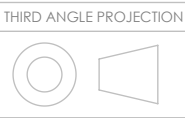
DETAIL A
SCALE 1 : 5



Fabrication Drawing: 5384-02-07



GENERAL DIMM TOLERANCES EXCEPT WHERE STATED
GENERAL ±2.0mm Length / ±1.0mm Hole-Hole
ANGULAR ±0°30'
ALL DIMENSIONS IN MILLIMETRES
UNLESS OTHERWISE STATED
7mm Fillet Weld (z) WPS1
UNLESS OTHERWISE STATED



DO NOT SCALE
IF IN DOUBT PLEASE ASK

CLIENT:

Wildstone

CONTRACT TITLE:

Shah Jalal Advertising Structure

DRAWING TITLE:

General Arrangement

CONTRACT No.
5384

QUOTATION No.

DRAWING No.
5384-02-01

DRAWN BY
KM

CHECKED BY

FIRST ISSUE DATE
07/12/2018

SHEET
4 of 4

SCALE
1:100

SHEET SIZE
A3 - Landscape

Revision
A
13/12/2018
KM
Tiebar in V Corner detail added

Revision
B
P18/01/2019
KM
Plate Insert Added on Column,
Tiebars updated

Revision
C

Revision
D

Revision
E

Revision
F

CLIENT APPROVED:

EN 1090 EXC2
YES NO

EN 1090 EXC3
YES NO

NDT Req'd ?
YES NO

ASSES MONT
STEEL FABRICATION & INSTALLATION
SHOT BLASTING & POWDER COATING

The copyright in this drawing is owned by Assesmont Ltd.
It may not be published or reproduced in any material form
without the express written consent of the Company.