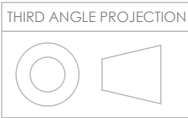


GENERAL DIMM TOLERANCES EXCEPT WHERE STATED  
GENERAL ±2.0mm Length / ±1.0mm Hole-Hole  
ANGULAR ±0°30'

ALL DIMENSIONS IN MILLIMETRES  
UNLESS OTHERWISE STATED

8mm Fillet Weld (z) WPS1  
UNLESS OTHERWISE STATED



DO NOT SCALE  
IF IN DOUBT PLEASE ASK

CLIENT:  
**Wildstone**

CONTRACT TITLE:  
**M8 Advertising Structure**

DRAWING TITLE:  
**Foundation Stage GA**

CONTRACT No.  
**5460**

QUOTATION No.  
**12623-A**

DRAWING No.  
**5640-01-02**

DRAWN BY  
**KM**

CHECKED BY

FIRST ISSUE DATE  
**02/01/2019**

SHEET  
**1 of 7**

SCALE  
**1:50**

SHEET SIZE  
**A3 - Landscape**

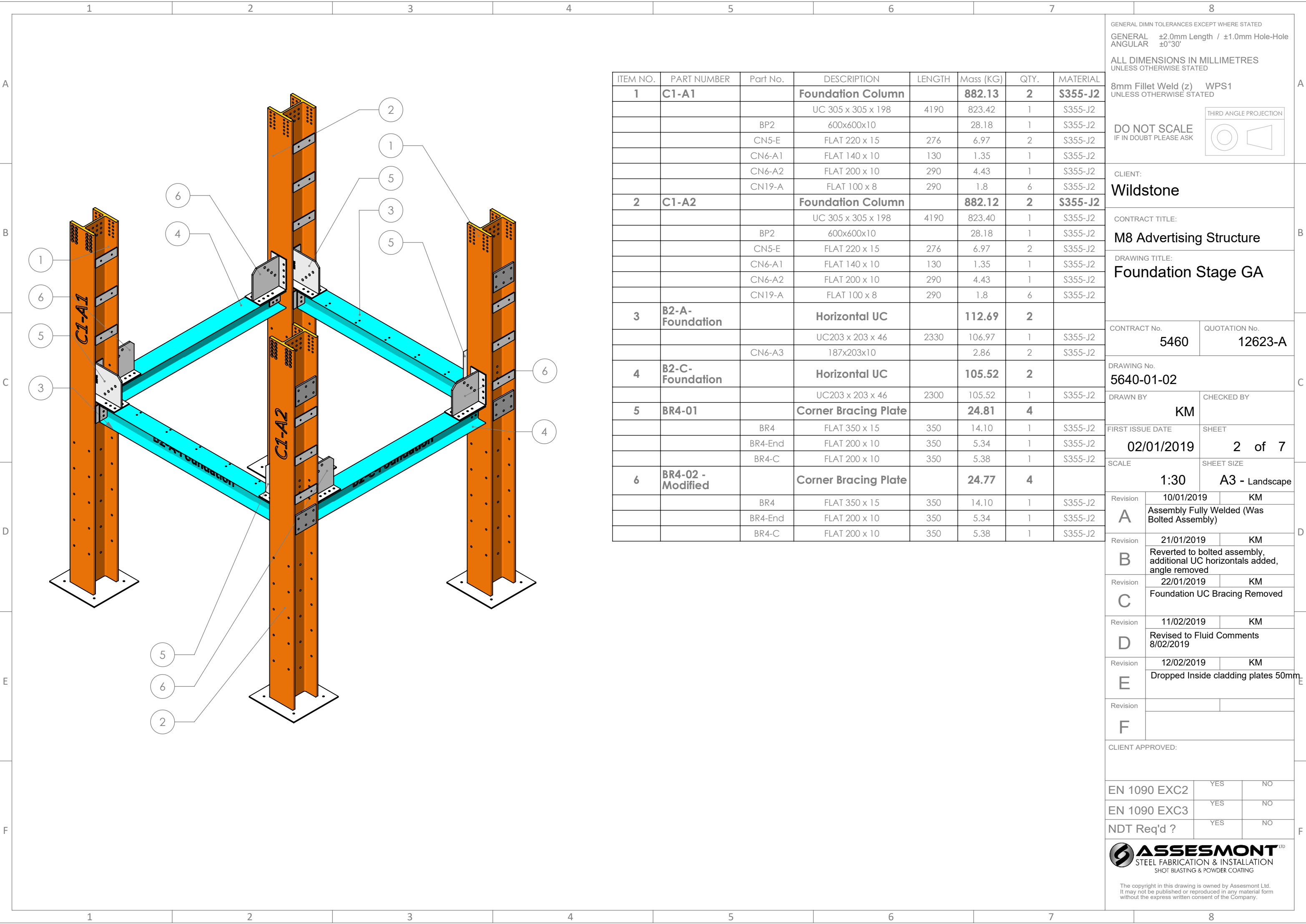
Revision	10/01/2019	KM
<b>A</b>	Assembly Fully Welded (Was Bolted Assembly)	
Revision	21/01/2019	KM
<b>B</b>	Reverted to bolted assembly, additional UC horizontals added, angle removed	
Revision	22/01/2019	KM
<b>C</b>	Foundation UC Bracing Removed	
Revision	11/02/2019	KM
<b>D</b>	Revised to Fluid Comments 8/02/2019	
Revision	12/02/2019	KM
<b>E</b>	Dropped Inside cladding plates 50mm	
Revision		
<b>F</b>		

CLIENT APPROVED:

EN 1090 EXC2	YES	NO
EN 1090 EXC3	YES	NO
NDT Req'd ?	YES	NO

**ASSES MONT**  
STEEL FABRICATION & INSTALLATION  
SHOT BLASTING & POWDER COATING

The copyright in this drawing is owned by Assesmont Ltd.  
It may not be published or reproduced in any material form  
without the express written consent of the Company.



ITEM NO.	PART NUMBER	Part No.	DESCRIPTION	LENGTH	Mass (KG)	QTY.	MATERIAL
1	C1-A1		Foundation Column		882.13	2	S355-J2
			UC 305 x 305 x 198	4190	823.42	1	S355-J2
		BP2	600x600x10		28.18	1	S355-J2
		CN5-E	FLAT 220 x 15	276	6.97	2	S355-J2
		CN6-A1	FLAT 140 x 10	130	1.35	1	S355-J2
		CN6-A2	FLAT 200 x 10	290	4.43	1	S355-J2
		CN19-A	FLAT 100 x 8	290	1.8	6	S355-J2
2	C1-A2		Foundation Column		882.12	2	S355-J2
			UC 305 x 305 x 198	4190	823.40	1	S355-J2
		BP2	600x600x10		28.18	1	S355-J2
		CN5-E	FLAT 220 x 15	276	6.97	2	S355-J2
		CN6-A1	FLAT 140 x 10	130	1.35	1	S355-J2
		CN6-A2	FLAT 200 x 10	290	4.43	1	S355-J2
		CN19-A	FLAT 100 x 8	290	1.8	6	S355-J2
3	B2-A-Foundation		Horizontal UC		112.69	2	
			UC203 x 203 x 46	2330	106.97	1	S355-J2
		CN6-A3	187x203x10		2.86	2	S355-J2
4	B2-C-Foundation		Horizontal UC		105.52	2	
			UC203 x 203 x 46	2300	105.52	1	S355-J2
5	BR4-01		Corner Bracing Plate		24.81	4	
		BR4	FLAT 350 x 15	350	14.10	1	S355-J2
		BR4-End	FLAT 200 x 10	350	5.34	1	S355-J2
		BR4-C	FLAT 200 x 10	350	5.38	1	S355-J2
6	BR4-02 - Modified		Corner Bracing Plate		24.77	4	
		BR4	FLAT 350 x 15	350	14.10	1	S355-J2
		BR4-End	FLAT 200 x 10	350	5.34	1	S355-J2
		BR4-C	FLAT 200 x 10	350	5.38	1	S355-J2

GENERAL DIMN TOLERANCES EXCEPT WHERE STATED  
GENERAL ±2.0mm Length / ±1.0mm Hole-Hole  
ANGULAR ±0°30'

ALL DIMENSIONS IN MILLIMETRES  
UNLESS OTHERWISE STATED

8mm Fillet Weld (z) WPS1  
UNLESS OTHERWISE STATED

THIRD ANGLE PROJECTION

DO NOT SCALE  
IF IN DOUBT PLEASE ASK

CLIENT:  
**Wildstone**

CONTRACT TITLE:  
**M8 Advertising Structure**

DRAWING TITLE:  
**Foundation Stage GA**

CONTRACT No.  
**5460**

QUOTATION No.  
**12623-A**

DRAWING No.  
**5640-01-02**

DRAWN BY  
**KM**

CHECKED BY

FIRST ISSUE DATE  
**02/01/2019**

SHEET  
**2 of 7**

SCALE  
**1:30**

SHEET SIZE  
**A3 - Landscape**

Revision  
**A**

10/01/2019  
**KM**

Assembly Fully Welded (Was Bolted Assembly)

Revision  
**B**

21/01/2019  
**KM**

Reverted to bolted assembly, additional UC horizontals added, angle removed

Revision  
**C**

22/01/2019  
**KM**

Foundation UC Bracing Removed

Revision  
**D**

11/02/2019  
**KM**

Revised to Fluid Comments  
8/02/2019

Revision  
**E**

12/02/2019  
**KM**

Dropped Inside cladding plates 50mm

Revision  
**F**

CLIENT APPROVED:

EN 1090 EXC2  
YES NO

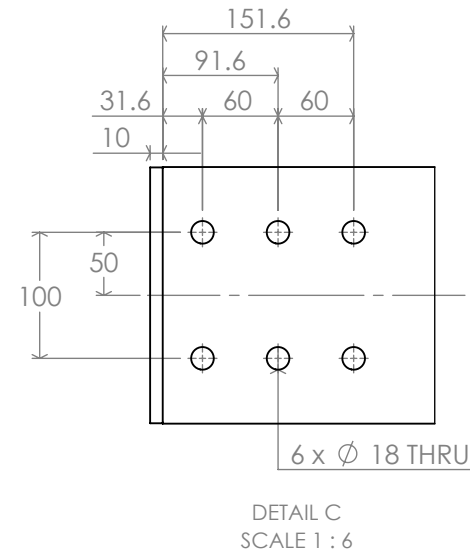
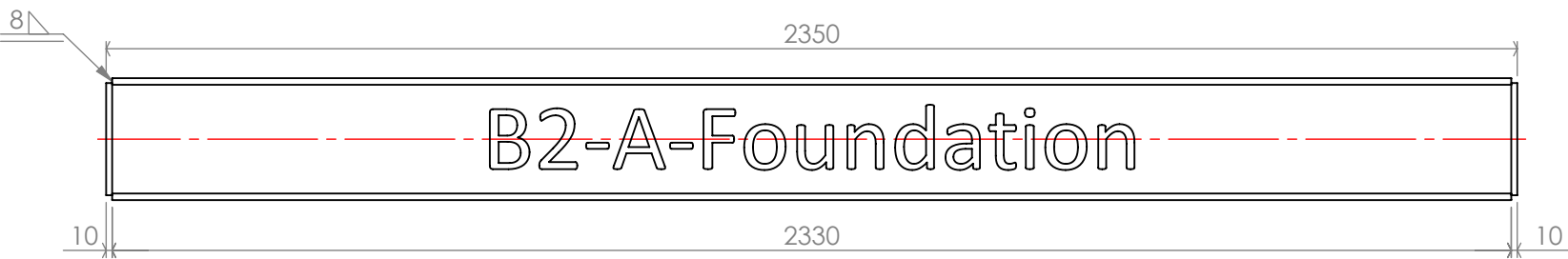
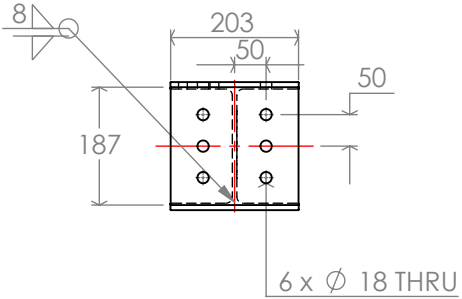
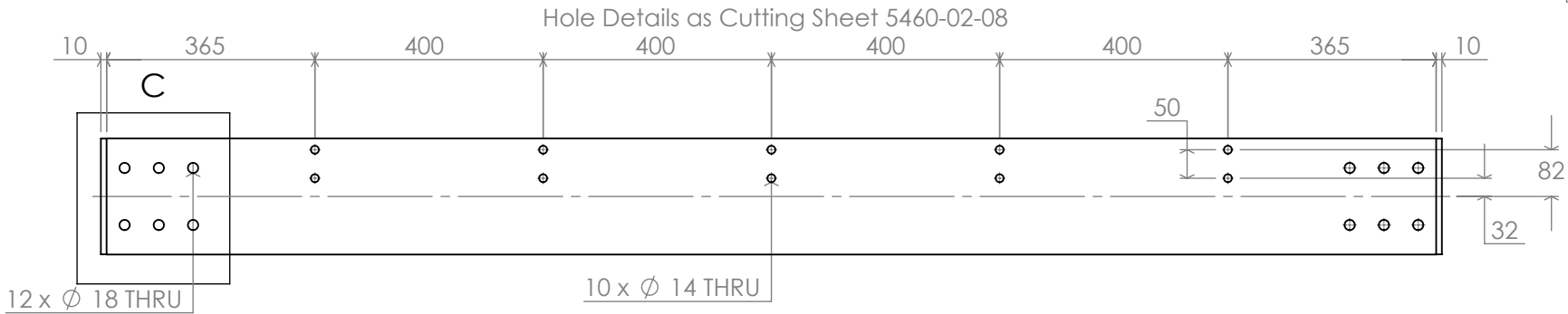
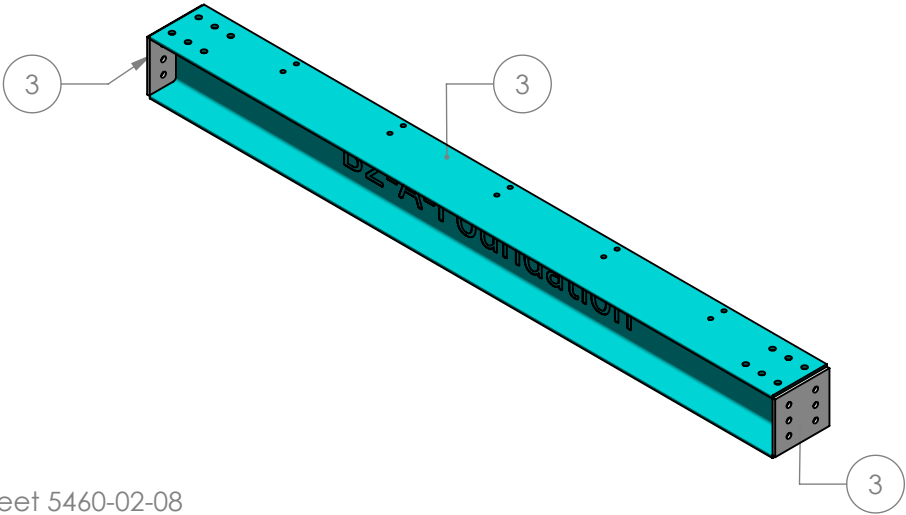
EN 1090 EXC3  
YES NO

NDT Req'd ?  
YES NO

**ASSES MONT**<sup>™</sup>  
STEEL FABRICATION & INSTALLATION  
SHOT BLASTING & POWDER COATING

The copyright in this drawing is owned by Assesmont Ltd.  
It may not be published or reproduced in any material form  
without the express written consent of the Company.

B2-A-Foundation  
2 off Req'd  
112.69 kg  
S355-J0 (Tested to J2)  
Galvanized Finish



ITEM NO.	Part No.	DESCRIPTION	QTY.	LENGTH	MATERIAL	Mass (KG)
1	B2-A Foundation	UC203 x 203 x 46	1	2330	S355-J2	106.97
2	CN6-A3	187x203x10	2		S355-J2	2.86

GENERAL DIMN TOLERANCES EXCEPT WHERE STATED  
GENERAL ±2.0mm Length / ±1.0mm Hole-Hole  
ANGULAR ±0°30'

ALL DIMENSIONS IN MILLIMETRES  
UNLESS OTHERWISE STATED

8mm Fillet Weld (z) WPS1  
UNLESS OTHERWISE STATED

DO NOT SCALE  
IF IN DOUBT PLEASE ASK

THIRD ANGLE PROJECTION

CLIENT:  
**Wildstone**

CONTRACT TITLE:  
**M8 Advertising Structure**

DRAWING TITLE:  
**Foundation Stage GA**

CONTRACT No. **5460** QUOTATION No. **12623-A**

DRAWING No. **5640-01-02**

DRAWN BY **KM** CHECKED BY

FIRST ISSUE DATE **02/01/2019** SHEET **3 of 7**

SCALE **1:12** SHEET SIZE **A3 - Landscape**

Revision **A** 10/01/2019 **KM**  
Assembly Fully Welded (Was Bolted Assembly)

Revision **B** 21/01/2019 **KM**  
Reverted to bolted assembly, additional UC horizontals added, angle removed

Revision **C** 22/01/2019 **KM**  
Foundation UC Bracing Removed

Revision **D** 11/02/2019 **KM**  
Revised to Fluid Comments 8/02/2019

Revision **E** 12/02/2019 **KM**  
Dropped Inside cladding plates 50mm

Revision **F**

CLIENT APPROVED:

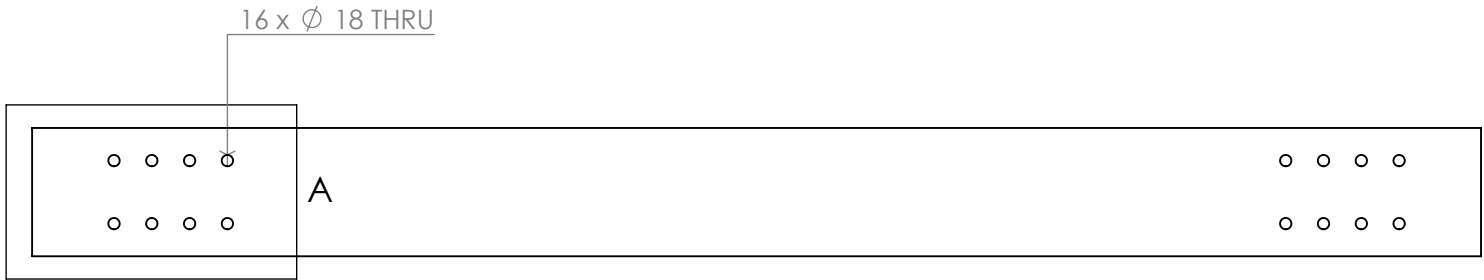
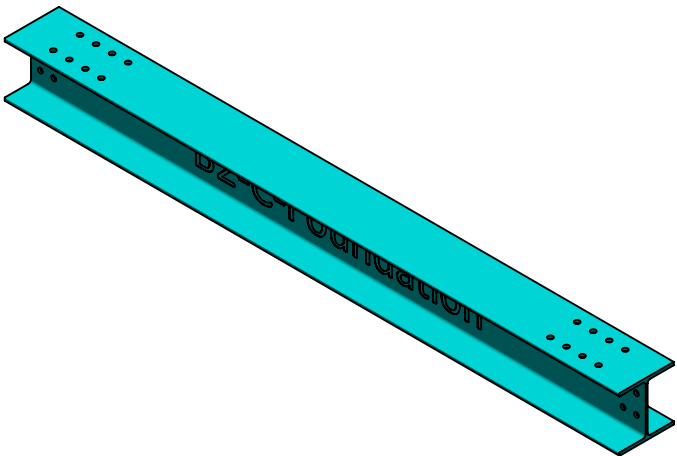
EN 1090 EXC2	YES	NO ✓
EN 1090 EXC3	YES ✓	NO
NDT Req'd ?	YES ✓	NO

**ASSES MONT**  
STEEL FABRICATION & INSTALLATION  
SHOT BLASTING & POWDER COATING

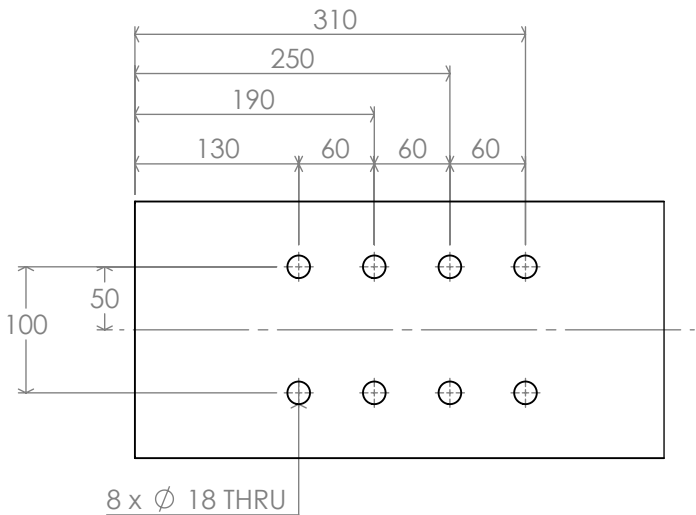
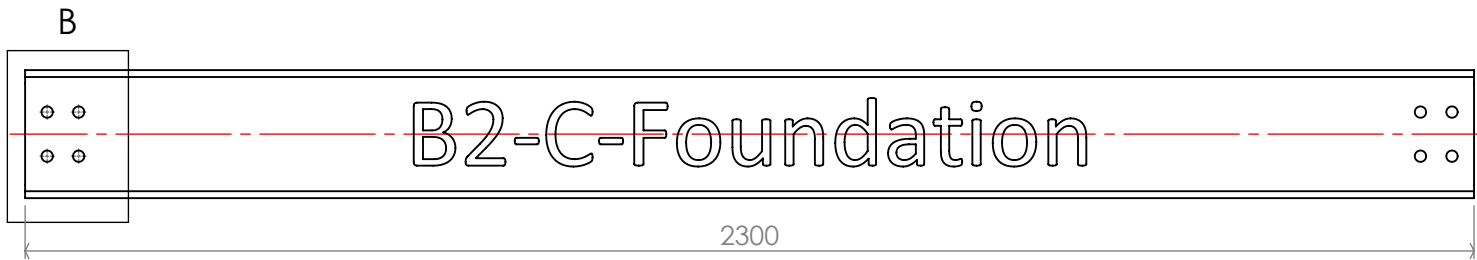
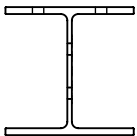
The copyright in this drawing is owned by Assesmont Ltd.  
It may not be published or reproduced in any material form  
without the express written consent of the Company.



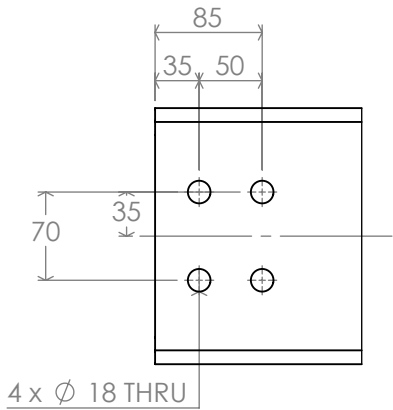
B2-C-Foundation  
2 off Req'd  
105.52 kg  
S355-J0 (Tested to J2)  
Galvanized Finish



UC203 x 203 x 46



DETAIL A  
SCALE 1 : 6



DETAIL B  
SCALE 1 : 6

GENERAL DIMN TOLERANCES EXCEPT WHERE STATED  
GENERAL ±2.0mm Length / ±1.0mm Hole-Hole  
ANGULAR ±0°30'

ALL DIMENSIONS IN MILLIMETRES  
UNLESS OTHERWISE STATED

8mm Fillet Weld (z) WPS1  
UNLESS OTHERWISE STATED

DO NOT SCALE  
IF IN DOUBT PLEASE ASK

THIRD ANGLE PROJECTION

CLIENT:  
**Wildstone**

CONTRACT TITLE:  
**M8 Advertising Structure**

DRAWING TITLE:  
**Foundation Stage GA**

CONTRACT No. **5460** QUOTATION No. **12623-A**

DRAWING No.  
**5640-01-02**

DRAWN BY **KM** CHECKED BY

FIRST ISSUE DATE **02/01/2019** SHEET **4 of 7**

SCALE **1:12** SHEET SIZE **A3 - Landscape**

Revision **A** 10/01/2019 **KM**  
Assembly Fully Welded (Was Bolted Assembly)

Revision **B** 21/01/2019 **KM**  
Reverted to bolted assembly, additional UC horizontals added, angle removed

Revision **C** 22/01/2019 **KM**  
Foundation UC Bracing Removed

Revision **D** 11/02/2019 **KM**  
Revised to Fluid Comments 8/02/2019

Revision **E** 12/02/2019 **KM**  
Dropped Inside cladding plates 50mm

Revision **F**

CLIENT APPROVED:

EN 1090 EXC2 YES NO ✓

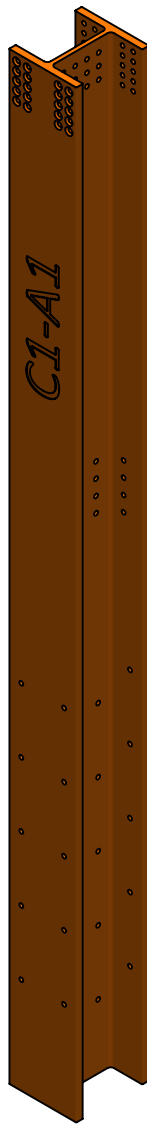
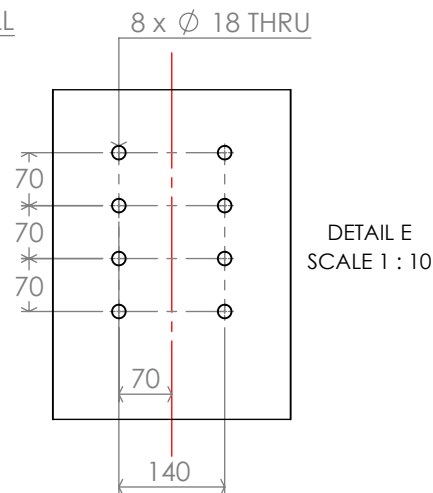
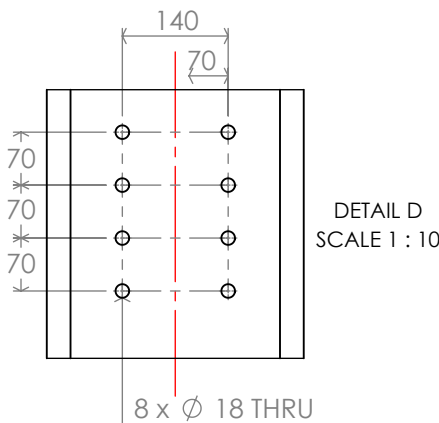
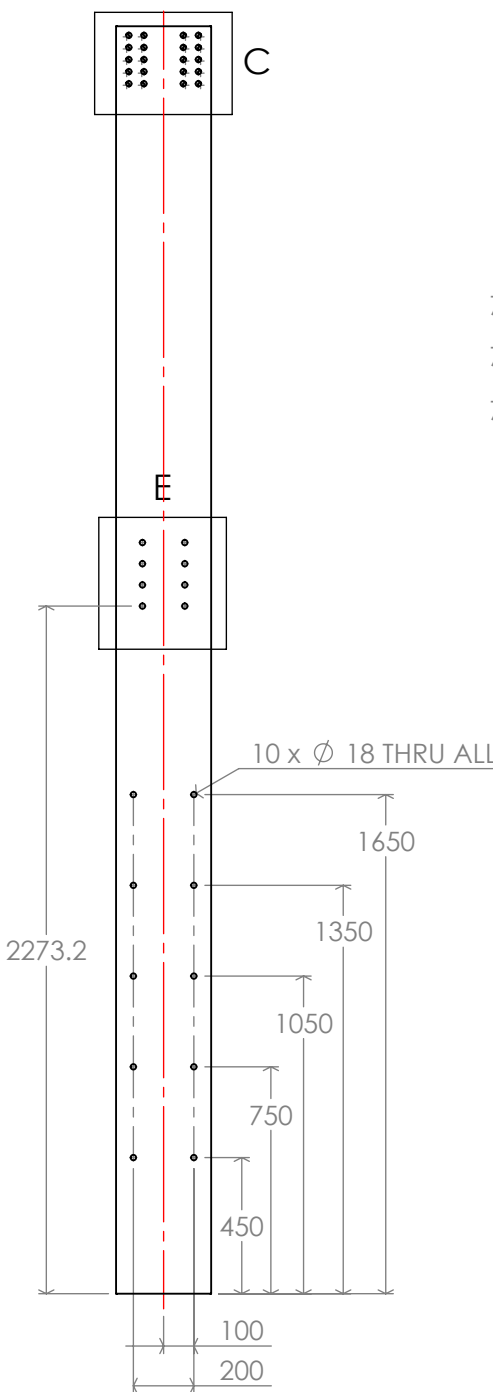
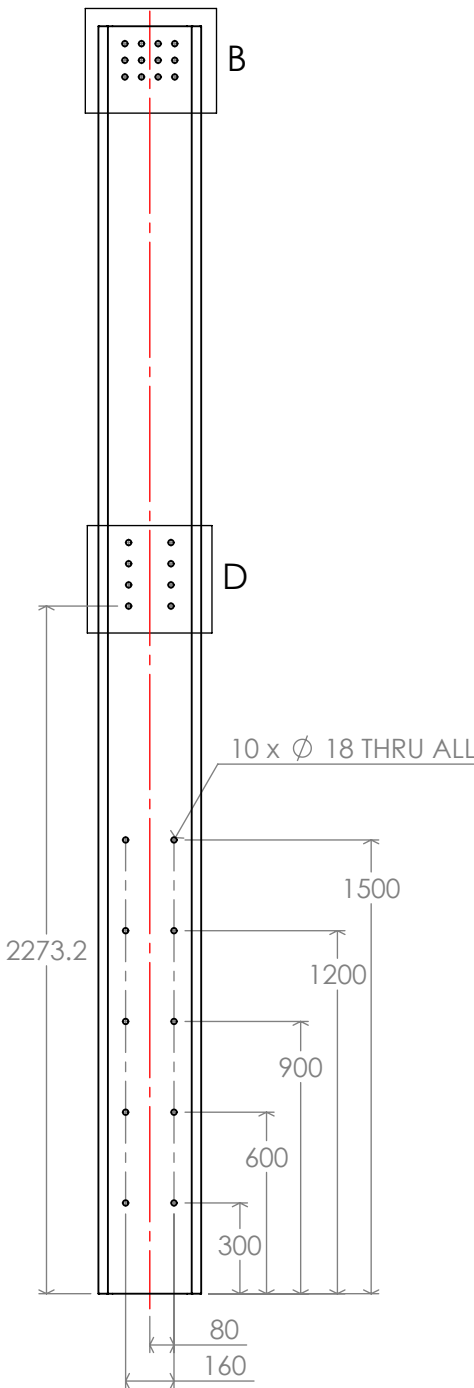
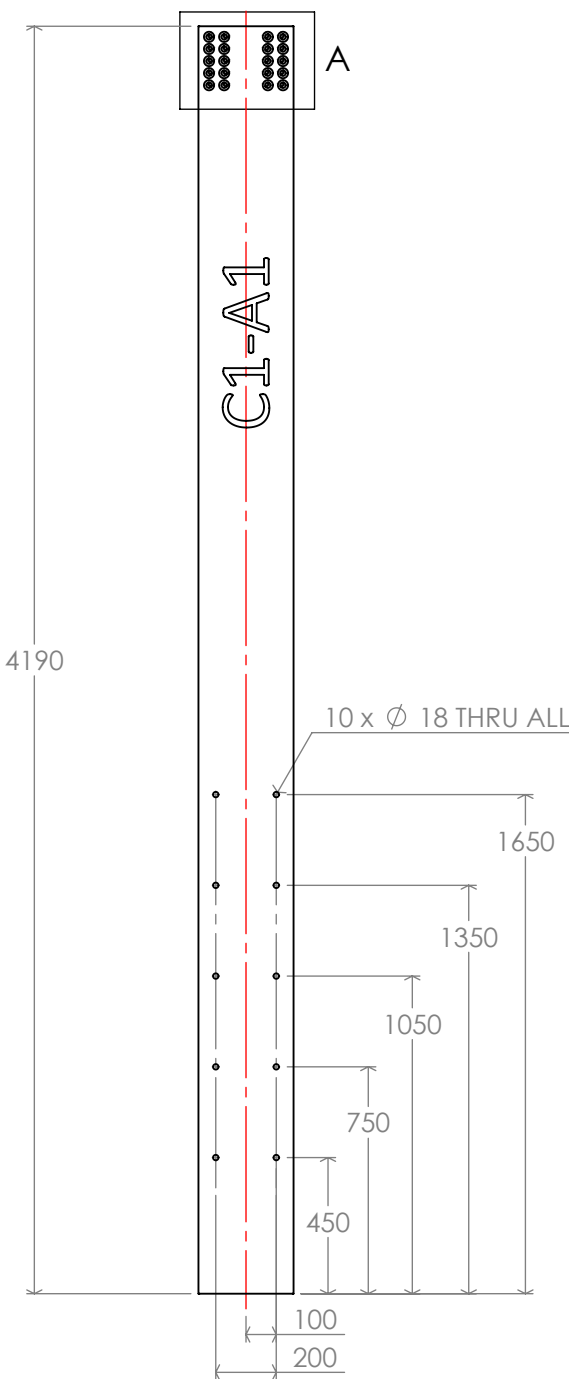
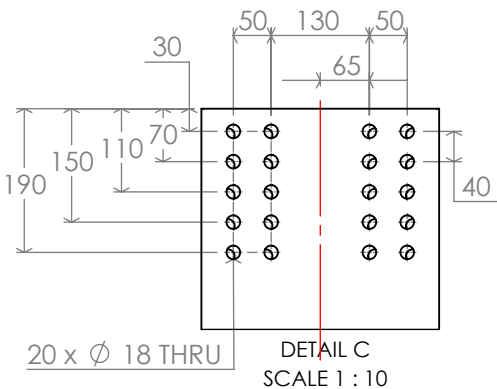
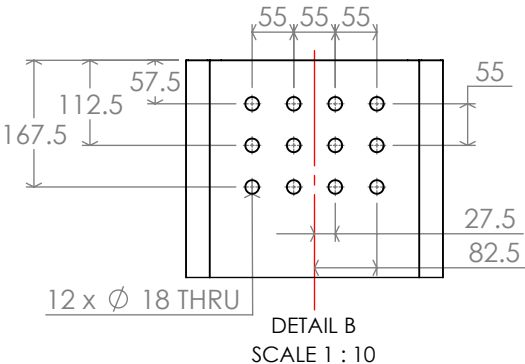
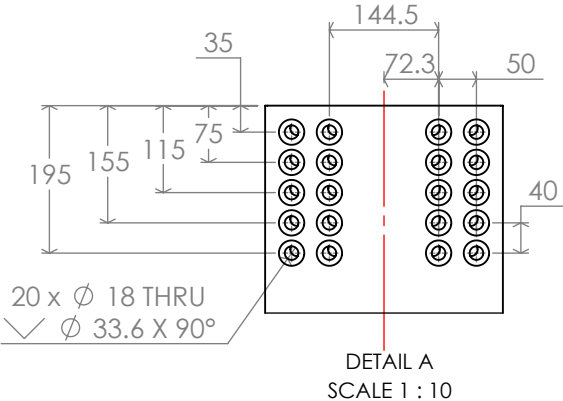
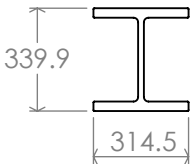
EN 1090 EXC3 YES ✓ NO

NDT Req'd ? YES NO ✓

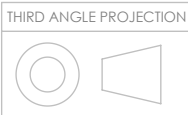
**ASSES MONT**  
STEEL FABRICATION & INSTALLATION  
SHOT BLASTING & POWDER COATING

The copyright in this drawing is owned by Assesmont Ltd.  
It may not be published or reproduced in any material form  
without the express written consent of the Company.

C1-A- Foundation  
UC 305 x 305 x 198  
S355-J0 (Tested to J2)  
823.42 kg  
4 off Req'd



GENERAL DIMN TOLERANCES EXCEPT WHERE STATED  
GENERAL  $\pm 2.0\text{mm}$  Length /  $\pm 1.0\text{mm}$  Hole-Hole  
ANGULAR  $\pm 0^\circ 30'$   
ALL DIMENSIONS IN MILLIMETRES  
UNLESS OTHERWISE STATED  
8mm Fillet Weld (z) WPS1  
UNLESS OTHERWISE STATED



DO NOT SCALE  
IF IN DOUBT PLEASE ASK

CLIENT:

Wildstone

CONTRACT TITLE:

M8 Advertising Structure

DRAWING TITLE:

Foundation Stage GA

CONTRACT No. 5460  
QUOTATION No. 12623-A

DRAWING No. 5640-01-02

DRAWN BY KM  
CHECKED BY

FIRST ISSUE DATE 02/01/2019  
SHEET 5 of 7

SCALE 1:25  
SHEET SIZE A3 - Landscape

Revision A  
10/01/2019 KM  
Assembly Fully Welded (Was Bolted Assembly)

Revision B  
21/01/2019 KM  
Reverted to bolted assembly, additional UC horizontals added, angle removed

Revision C  
22/01/2019 KM  
Foundation UC Bracing Removed

Revision D  
11/02/2019 KM  
Revised to Fluid Comments 8/02/2019

Revision E  
12/02/2019 KM  
Dropped Inside cladding plates 50mm

Revision F

CLIENT APPROVED:

EN 1090 EXC2 YES NO ✓  
EN 1090 EXC3 YES ✓ NO  
NDT Req'd ? YES ✓ NO

ASSESMENT  
STEEL FABRICATION & INSTALLATION  
SHOT BLASTING & POWDER COATING

The copyright in this drawing is owned by Assesmont Ltd.  
It may not be published or reproduced in any material form  
without the express written consent of the Company.

A

F

A

B

C

D

mE

F

---

---

---

---

---

---

---

---

---

---

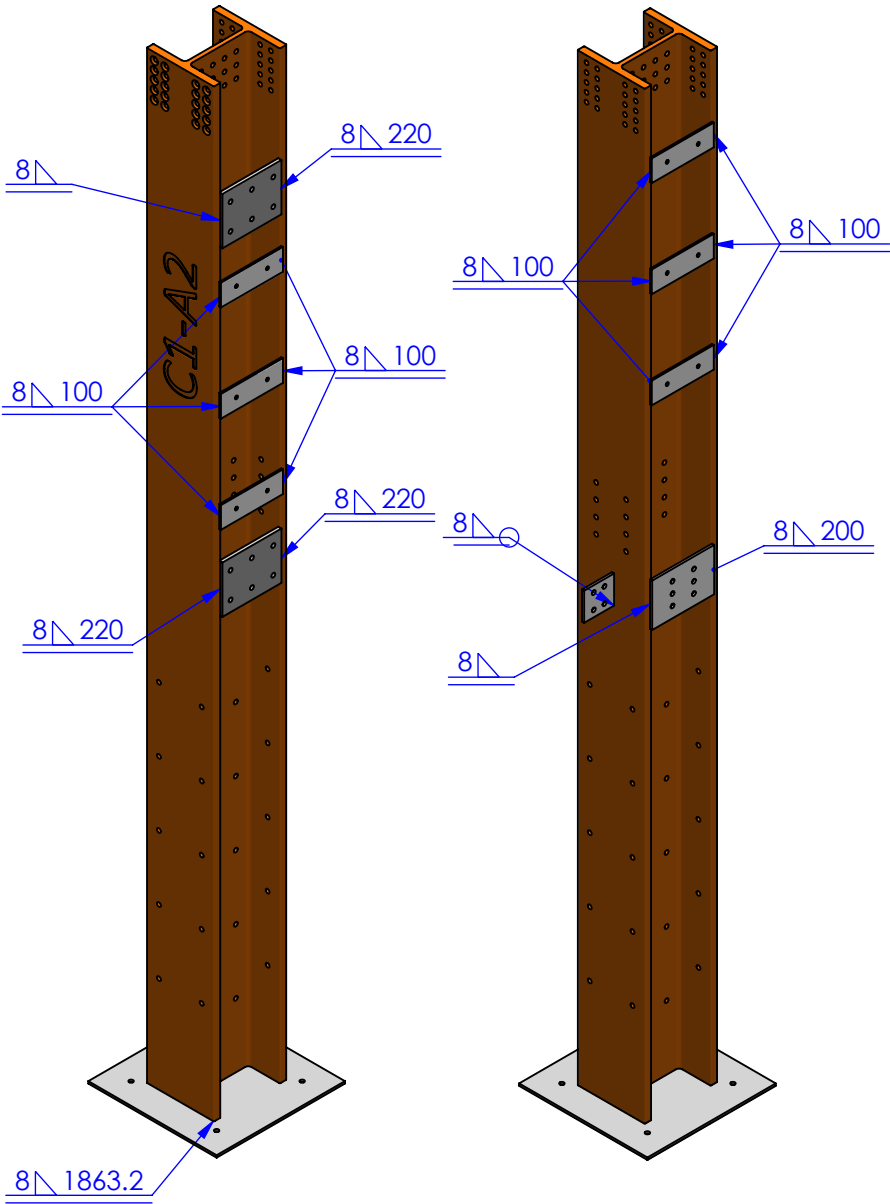
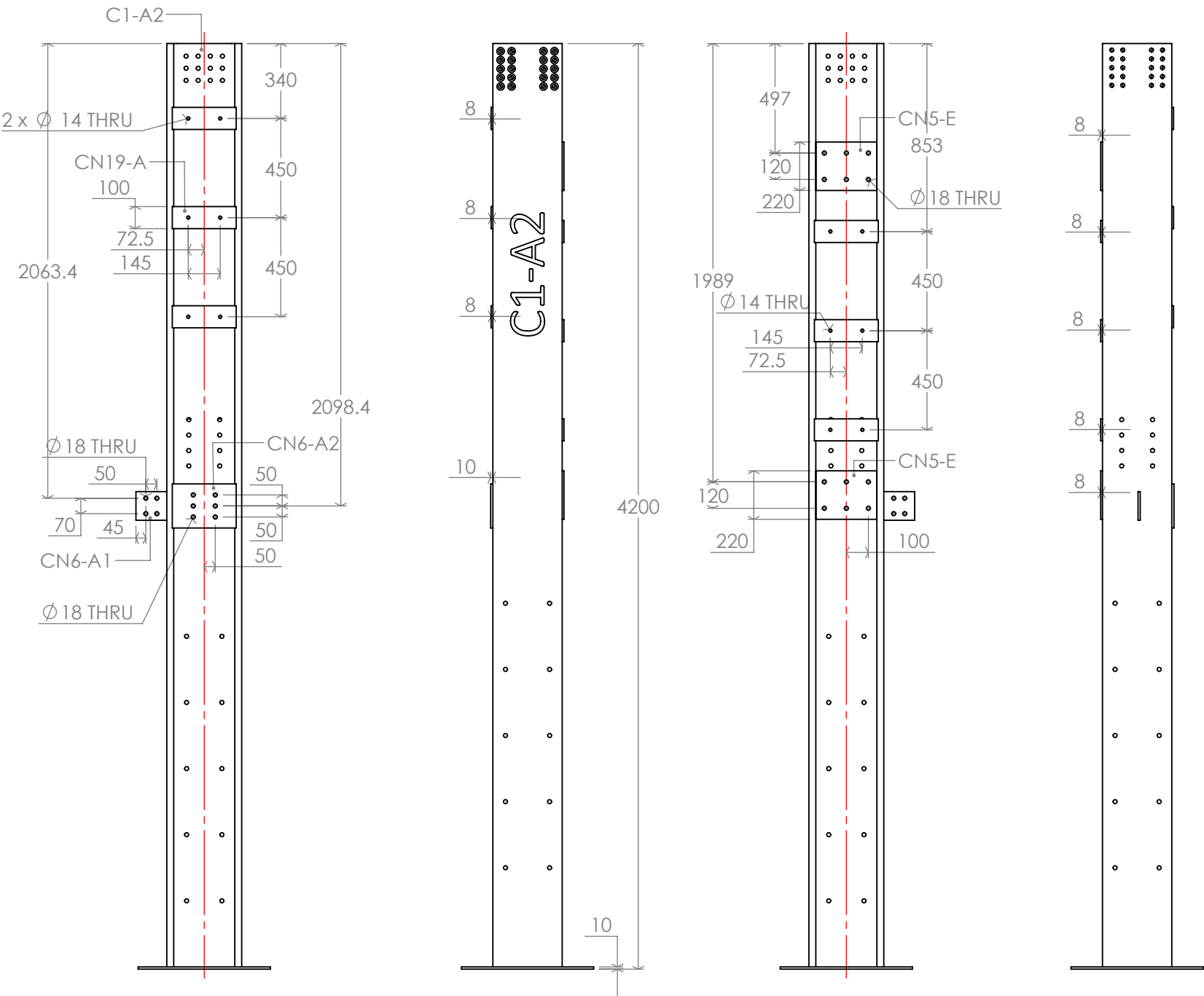
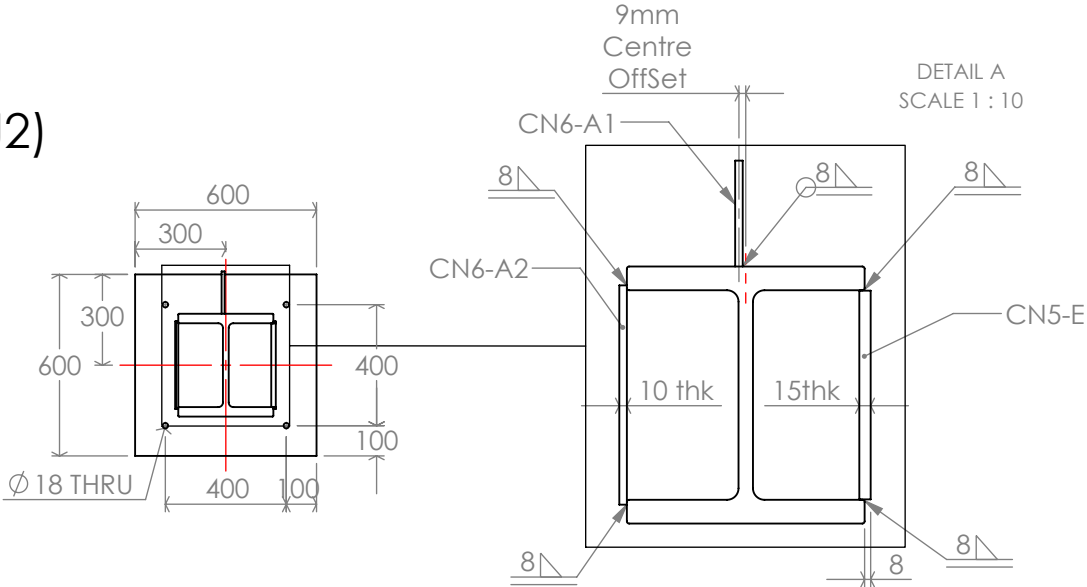
---

---



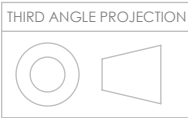
The copyright in this drawing is owned by Assesmont Ltd.  
It may not be published or reproduced in any material form  
without the express written consent of the Company.

C1-A2  
882.12 kg  
S355-J0 (Tested to J2)  
2 off Req'd  
Galvanized Finish



ITEM NO.	Part No.	DESCRIPTION	QTY.	LENGTH	MATERIAL	Mass (KG)
1	C1-A	UC 305 x 305 x 198	1	4190	S355-J2	823.40
2	BP2	600x600x10	1		S355-J2	28.18
3	CN5-E	FLAT 220 x 15	2	276	S355-J2	6.97
4	CN19-A	FLAT 100 x 8	6	290	S355-J2	1.8
5	CN6-A2	FLAT 200 x 10	1	290	S355-J2	4.43
6	CN6-A1	FLAT 140 x 10	1	130	S355-J2	1.35

GENERAL DIMN TOLERANCES EXCEPT WHERE STATED  
GENERAL ±2.0mm Length / ±1.0mm Hole-Hole  
ANGULAR ±0°30'  
ALL DIMENSIONS IN MILLIMETRES  
UNLESS OTHERWISE STATED  
8mm Fillet Weld (z) WPS1  
UNLESS OTHERWISE STATED



DO NOT SCALE  
IF IN DOUBT PLEASE ASK

CLIENT:  
**Wildstone**

CONTRACT TITLE:  
**M8 Advertising Structure**

DRAWING TITLE:  
**Foundation Stage GA**

CONTRACT No.  
**5460**

QUOTATION No.  
**12623-A**

DRAWING No.  
**5640-01-02**

DRAWN BY  
**KM**

CHECKED BY

FIRST ISSUE DATE  
**02/01/2019**

SHEET  
**7 of 7**

SCALE  
**1:25**

SHEET SIZE  
**A3 - Landscape**

Revision  
**A**  
10/01/2019  
KM  
Assembly Fully Welded (Was Bolted Assembly)

Revision  
**B**  
21/01/2019  
KM  
Reverted to bolted assembly, additional UC horizontals added, angle removed

Revision  
**C**  
22/01/2019  
KM  
Foundation UC Bracing Removed

Revision  
**D**  
11/02/2019  
KM  
Revised to Fluid Comments 8/02/2019

Revision  
**E**  
12/02/2019  
KM  
Dropped Inside cladding plates 50mm

Revision  
**F**

CLIENT APPROVED:

EN 1090 EXC2	YES	NO
EN 1090 EXC3	YES	NO
NDT Req'd ?	YES	NO

**ASSES MONT**  
STEEL FABRICATION & INSTALLATION  
SHOT BLASTING & POWDER COATING

The copyright in this drawing is owned by Assesmont Ltd.  
It may not be published or reproduced in any material form  
without the express written consent of the Company.