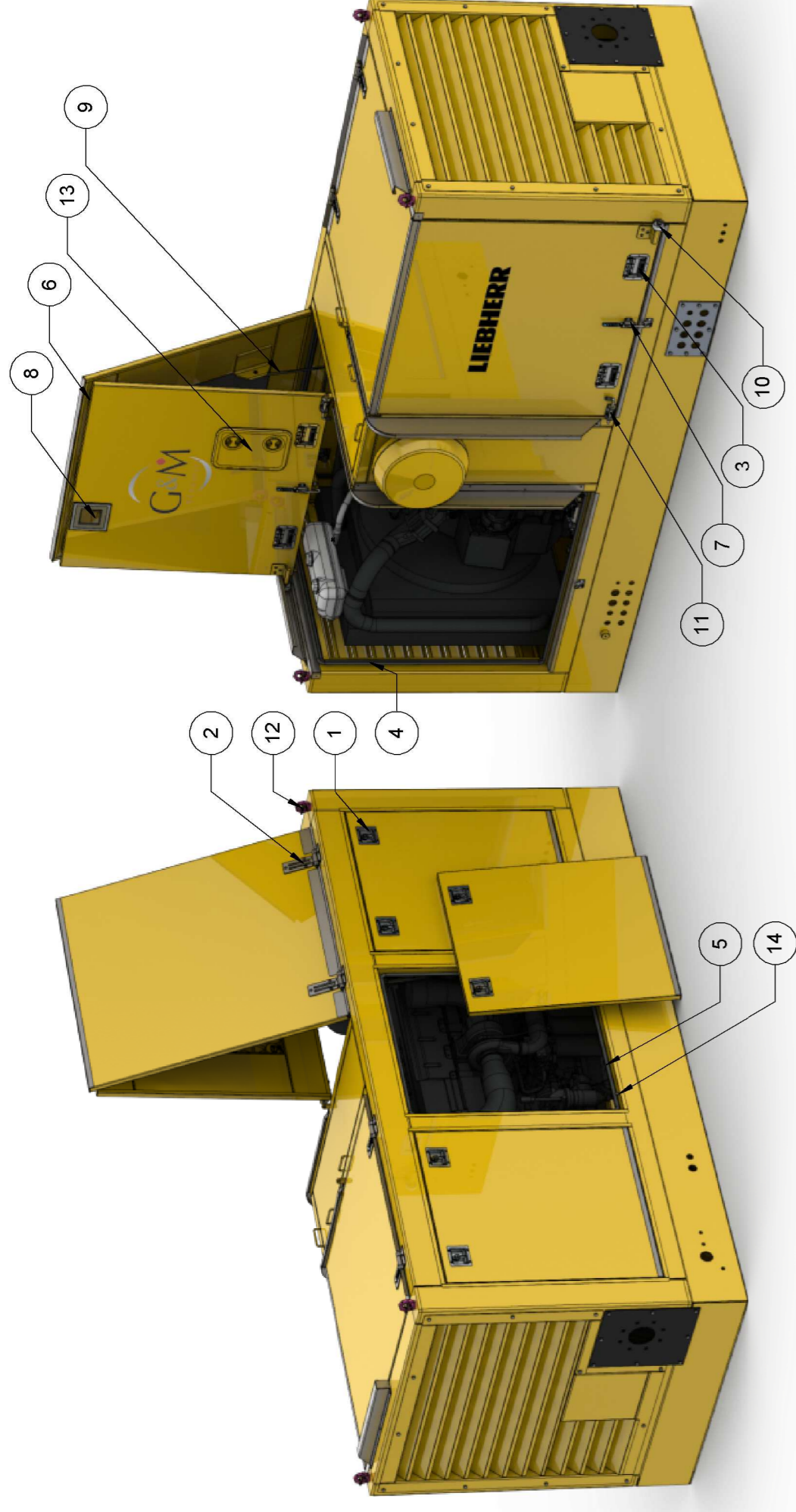
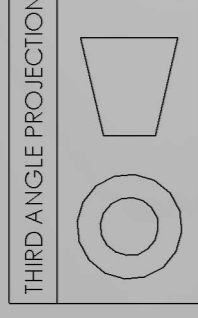


DRAWING No.  
LBSC3\_01\_01

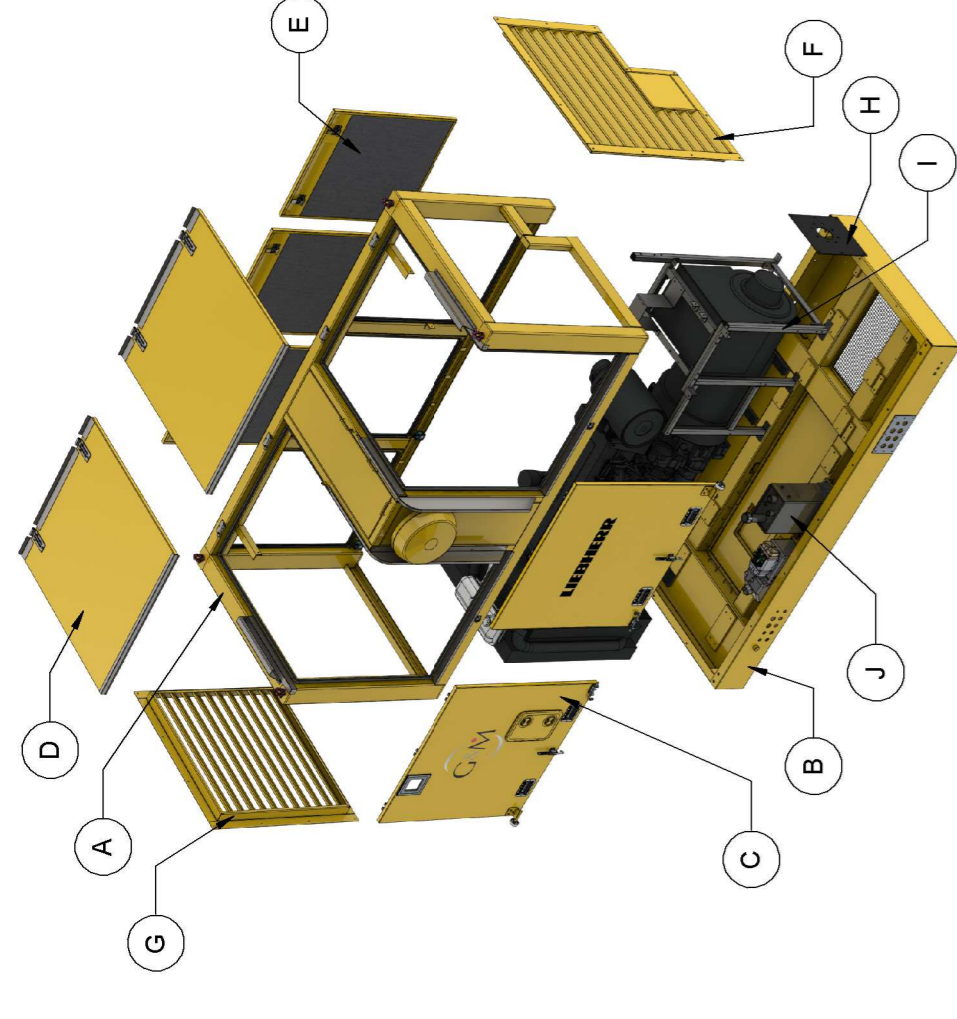
REVISION	DATE	APPD	DOCN
A	03/05/2013	KM	KM
B	29/08/2013	KM	KM



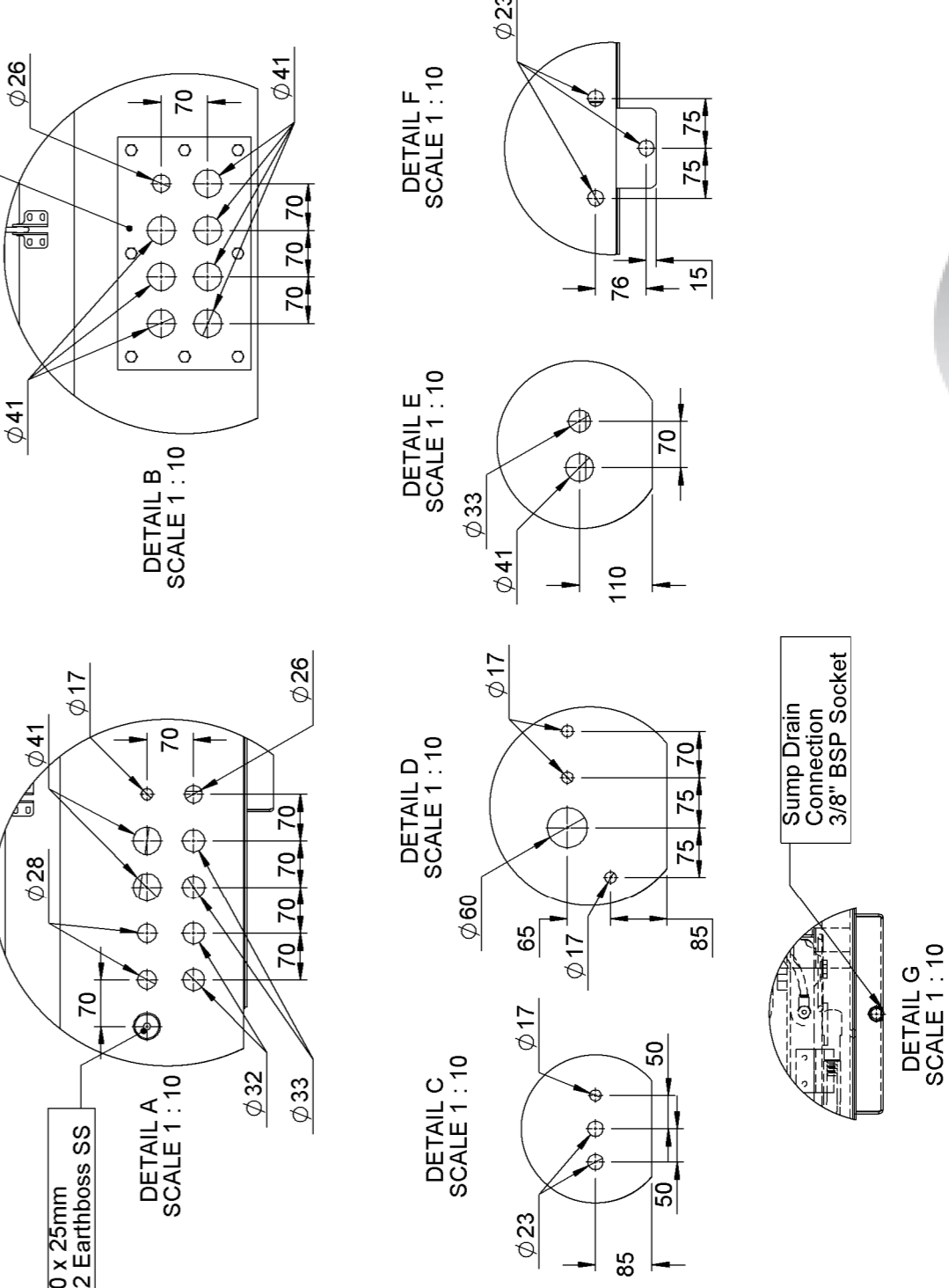
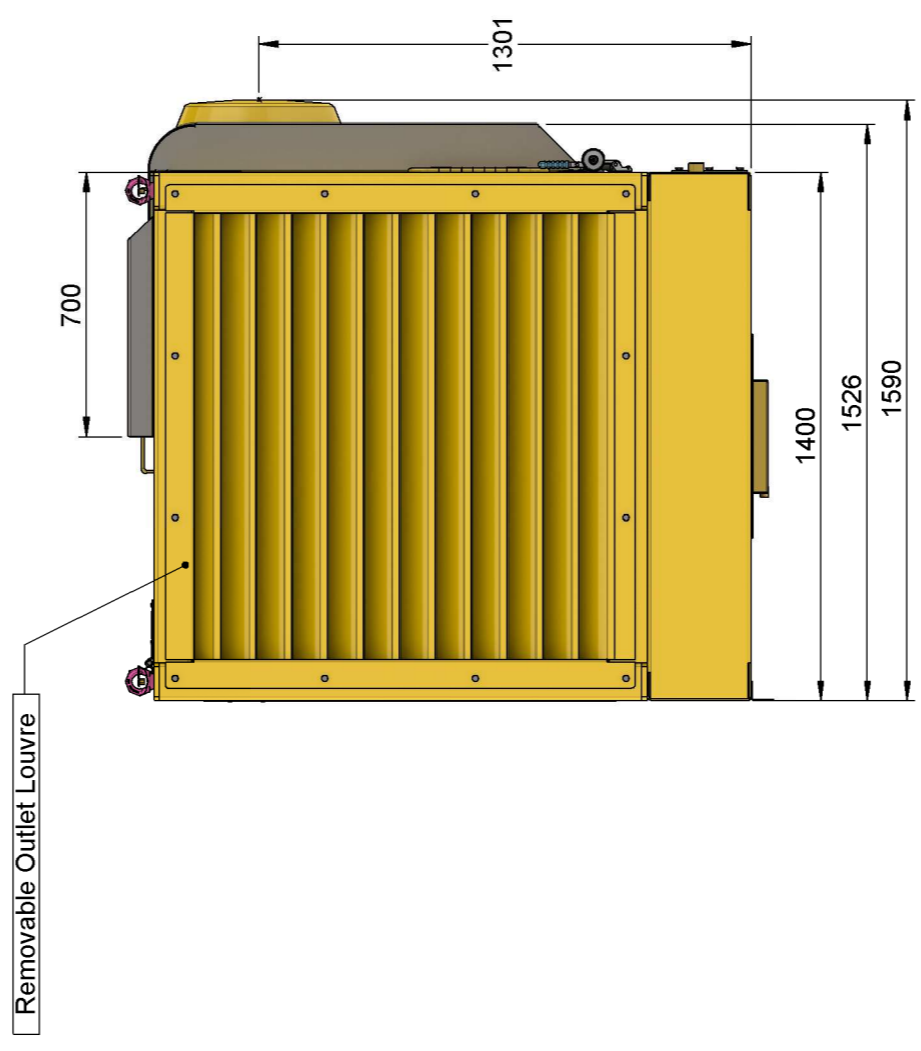
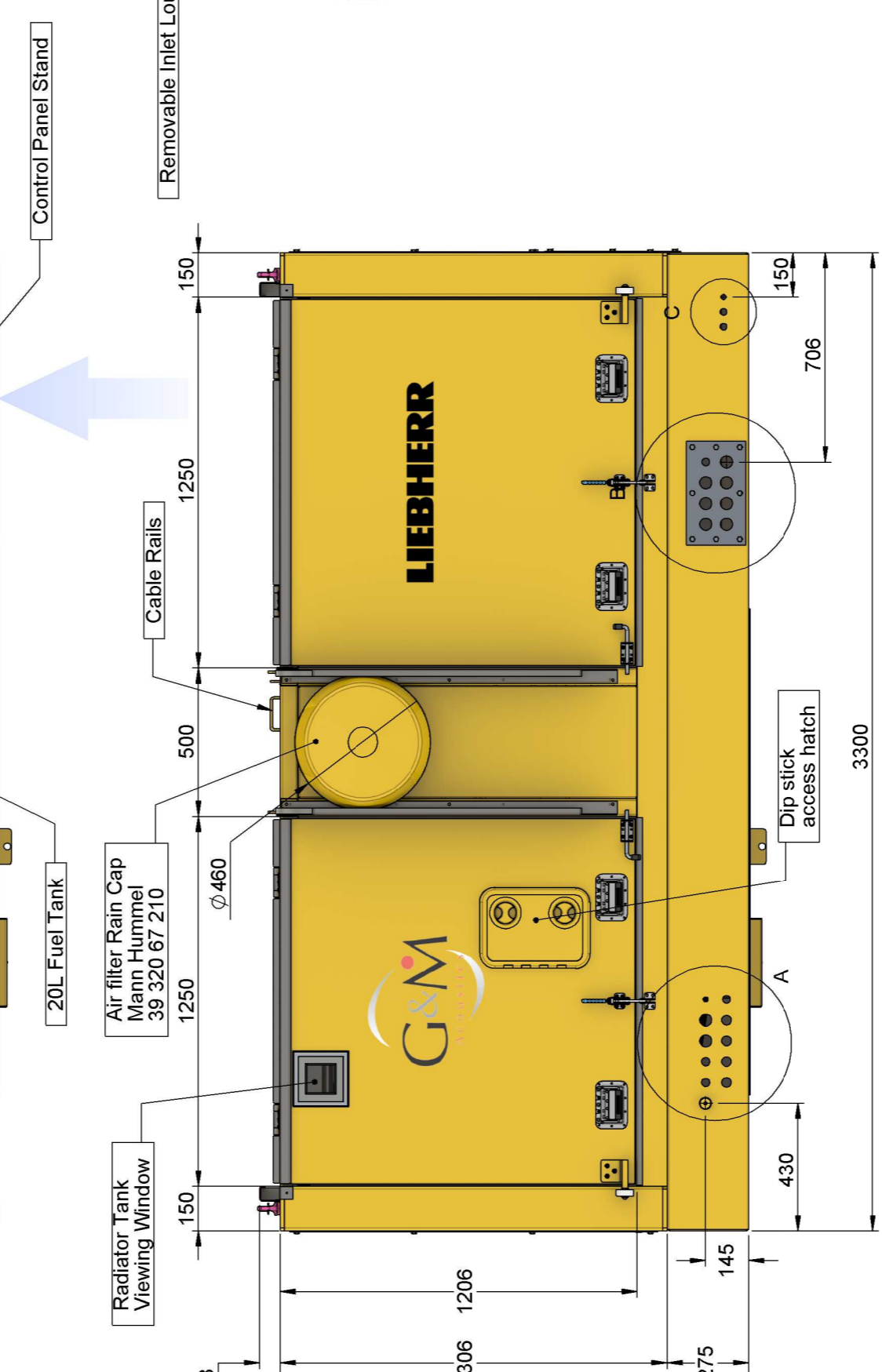
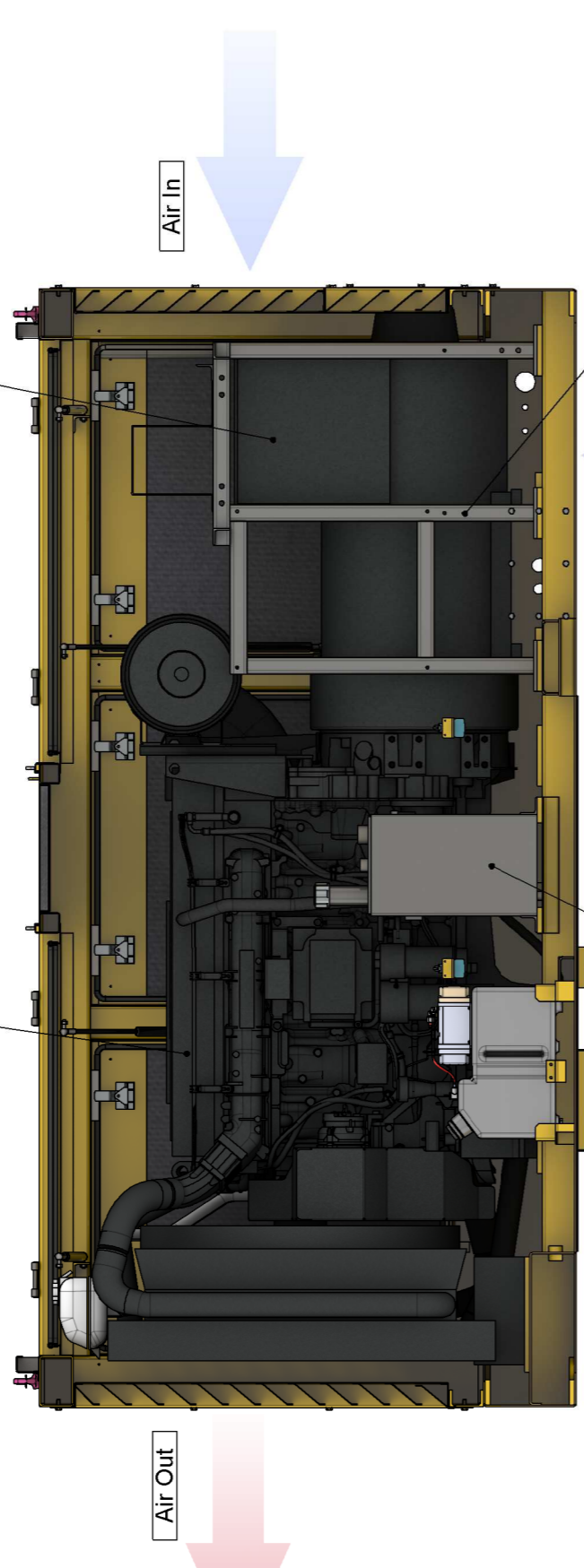
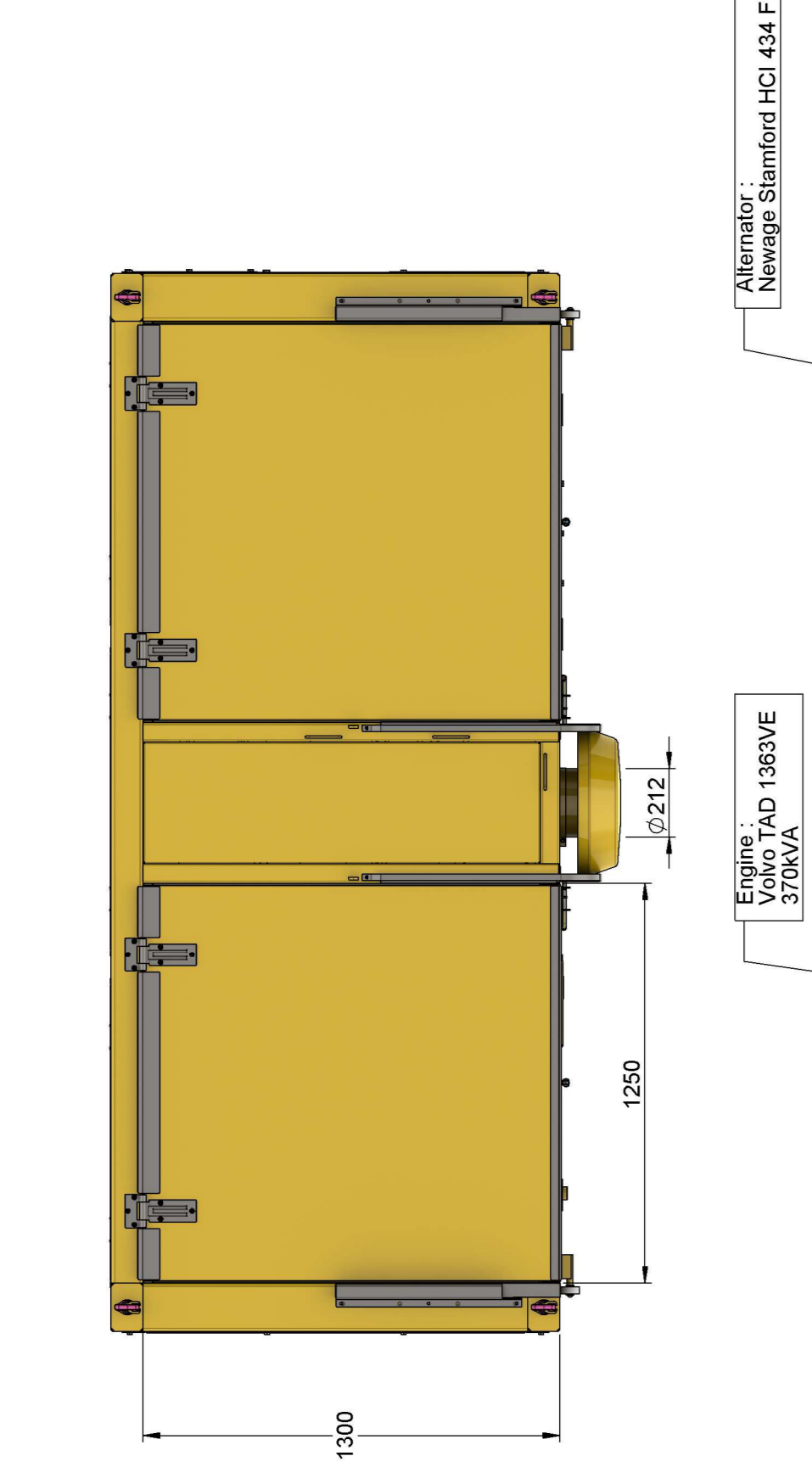
Item	Description	Code	Quantity
1	Non-locking T Handle (s/steel)	5589/542*	6
2	Door Hinge (Flat Slide Stainless)	10150619A	4
3	Recessed Handle	H7151S	4
4	Door Rubber Top Bubble	Type 8 - 480750	
5	Door Rubber Side Bubble	Type 2 - 493005	
6	Door Butt Hinge (Pair)	HD020035	6
7	Hook Clamp (s/steel)	4097 - 202	2
8	Clear Glass laminated Window	1285/4210	1
9	1000N Adjustable Gas Spring	491139	2
10	Castor Wheel White Nylon	BOLT444/12SS	2
11	Shoot Bolt	VRS-F-M20	4
12	Lifting Lug VRS-F-M20	850213	1
13	Force 4 Inspection Hatch		1
14	Locating Pin M6		6

Part	Weight (approx)
Assembled Canopy	788.00 kg
Upper Door	54.00kg
Lower Door	57.00 kg
Removable Panel	22.00 kg
Louvre	45.00 kg
Base	425.00 kg
Control Frame	60.00 kg
Fuel Tank	25.00 kg
Total	1298.00 kg

Fixings	Size	Length	Quantity	Usage
Socket Dome	M6	20mm	32	Door Hook Clamps, Roller Guides
Socket Dome	M8	20mm	30	Flat Blade Door Hinges, Door Roller
Socket Dome	M10	50mm	2	Door Roller
Countersunk Cross Recess	M6	8mm	38	Door Inner Hinges, Roller Guide
Hex Set	M8	25mm	30	Slump Panel, Gland Plate
Hex Set	M10	25mm	50	Base Fixing, Louvers, Exhaust Plate
Hex Set	M16	40mm	8	Base Fixing



Item	Description	Drawing
A	Canopy Framework	LBSC3_02_01
B	Base Assembly	LBSC3_04_01
C	Lower Doors	LBSC3_05_02
D	Upper Doors	LBSC3_05_03
E	Removable Panels	LBSC3_07_01
F	Inlet Louvre	LBSC3_07_01
G	Outlet Louvre	LBSC3_07_01
H	Exhaust Plate	LBSC3_04_13
I	Control Panel Frame	LBSC3_12_01
J	Fuel Tank	LBSC3_13_01



Production No.	AS13/044-045
Customer Ref.	A16870 - A16871
Design Ref.	LBSC3
Quantity	6 / 6
Engine Model	Volvo TAD1363VE
Engine Output	370 KVA
Noise Level	90dBA@1m
Air Flow	RAL 1007 (Dalfodil Yellow)
Colour	'A' Series Acoustic Foam

# STRADDLE CARRIER

## LIEBHERR CRANES



G&M ACOUSTIC SOLUTIONS  
259 Greenstead Road  
Colchester, Essex, CO1 2SF  
Tel: +44(0)1206 790 754  
Fax: +44(0)1206 794 863  
www.gmp.co.uk



© G&M ACOUSTIC SOLUTIONS  
The copyright in this drawing is owned by G&M Acoustics.  
It may not be published or reproduced in any material form  
without the express written consent of the Company.